

JK-8009VC

产品使用说明书&产品零件图册

Manual book & parts book

JACK 杰克

工业缝纫机安全使用注意事项:

- 1.必须遵守基本措施;
- 2.必须经过专业培训,对缝纫机设备性能、
- 3.使用前应检查所有安全装置;
- 4.在安装机针、更换机针、压脚、针板、送布牙、弯针、旋梭或修理时,应立即关闭电源;
- 5.离开缝纫机或工作场所时应关闭电源;
- 6.使用离合马达时,要等待马达完全停止后再进行;
- 7.缝纫机及附属装置使用的机油,润滑油等液体流入眼睛或沾到皮肤上应立即清洗;
- 8.禁止用手触摸缝纫机通电时的零件或装置;
- 9.有关工业用平缝机与包缝机的修理、改造、主要机构的调整由专门技术人员来进行;
- 10.一般的维修保养由专人进行;
- 11.在电气方面的修理应在电气技术员的监督和指导下进行;
- 12.缝纫机使用期间应定期清扫;
- 13.为了正常安全运转,应安装地线,同时应在不受高频焊接机等强噪声源影响的环境下使用;
- 14.电源插头应由专人安装;
- 15.工业用平缝机、包缝机在指定用途以外不能使用。

环保要求:

- 1.使用过程中产生的废油及其他废弃物请根据当地环保的要求进行合理的处置。
- 2.请在使用完后及时关闭电源,减少电能的消耗。
- 3.请在说明书要求的电压及环境下使用,已延长产品的使用寿命,减少废弃物的产生。
- 4.机器报废后请勿将本机器及其附件作为普通的生活垃圾处理。请遵守本设备及其附件处理的本地法令,并支持回收行动。

Notes for safe use of industrial sewing machines : 1.

Basic measures must be observed.

2. Pass the specialized training and master sewing machine equipment performance.
3. All safety devices should be checked before use.
4. When installing needle, and changing needle, presser foot, plate, feed dog, bent needle, hook or repairing, the power supply should be turned off immediately.
5. Power should be turned off when leaving the sewing machine or workplace.
6. When using the clutch motor, please wait until the motor stops completely.
7. The machine oil and other liquids used in sewing machines and ancillary devices should be cleaned immediately when they are put into eyes or touch skin.
8. Do not touch the parts or devices when the machine is powered by hand.
9. The repair, renovation and adjustment of the main mechanisms of the relevant industrial sewing machines and overseers shall be carried out by specialized technicians.
10. General maintenance is carried out by specially-assigned persons.
11. Electrical repairs should be performed under the supervision and direction of the electrical technician.
12. The machine should be cleaned regularly during operation.
13. In order to operate normally and safely, ground lines should be installed, and they should be used in an environment free from strong noise sources such as high frequency welding machine.
14. Power plug should be installed by specially-assigned person.
15. Industrial lockstitch sewing machine and overlock sewing machine can not be used except the designated use.

Environmental requirements :

- 1、 Please dispose the waste oil and other waste products properly according to local environmental protection requirements.
- 2、 Please turn off the power after use to reduce power consumption.
- 3、 Please use under the voltage and environment required in the manual to extend the service life of the product and reduce waste generation.
- 4、 Do not treat the machine and its accessories as ordinary household garbage after being scrapped. Please comply with local laws governing the disposal of the equipment and its accessories and support recycling operations.



ШВЕЙ
Ш ПРОМ



目录

CONTENTS

| | |
|---|----|
| JK-8009VC 使用说明/Use Manual | 1 |
| 一、机壳部件/Frane assemblies | 6 |
| 二、缝台盖部件/Cloth plate assemblies | 9 |
| 三、送料部件/Feed assemblies | 12 |
| 四、主轴部件/Crankshaft drive assemblies | 17 |
| 五、勾线部件/Thread takeup assemblies | 20 |
| 六、喂针部件/Needle feeding assemblies | 26 |
| 七、针杆部件/Needle bar assemblies | 28 |
| 八、压脚部件/Presser foot assemblies | 33 |
| 九、夹线器部件/Tension spring assemblies | 37 |
| 十、油泵部件/Lubrication assemblies | 38 |
| 十一、传送部件/Transmission assemblies | 41 |
| 十二、后凸轮架部件/After cam Fight assemblies | 44 |
| 十三、后凸轮部件/After cam assemblies | 47 |
| 十四、附件部件(1)/Accessories assemblies | 35 |
| 十五、附件部件(2)/Accessories assemblies | 37 |
| 十六、附件部件(3)/Accessories assemblies | 39 |
| 十七、DI 直驱专用部件/DI special for direct drive assemblies | 41 |
| 标准度量零件表/Standard measurement part list | 43 |

⚠️ 为了安全

对于缝纫机本身各种装置，我们充分考虑到它的安全性。请遵照基本的操作方法，安全的进行工作。

●拆除为保证安全所设置的装置，零件的情况下使用，是非常危险的，请绝对不要拆除后使用。

●缝纫机在使用时，请不要在缝纫机台板上放置工具及缝纫时不必要的物品。

●在对缝纫机进行检修、调节、清扫、穿线、换针等工作时，为防止发生事故，务必请切断电源，在确认即使踩下缝纫机踏板，缝纫机也不转动之后，再进行操作。

⚠️ OBSERVE THESE SAFETY PRECAUTIONS

Though Our takes the utmost care to produce safe sewing machines and devices, operators should follow these basic safety rules.

●To prevent accidents, do not remove safety devices or parts while operating the machine.

●Do not leave tools or other unnecessary objects on the machine table while operating the machine.

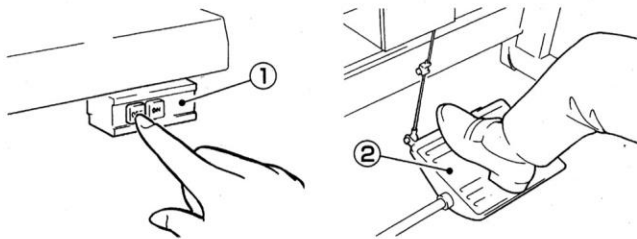
●Before maintenance, adjusting, cleaning, threading or replacing the needle, and to prevent accidents, be sure the power is turned off. Check that the machine will not operate when the pedal is pressed.

注意

使用离合式马达的情况下，在关掉电源①后因惯性作用会继续旋转。这时如不注意踩动缝纫机踏板②时，缝纫机会突然动作，这是很危险的。请在关掉电源后，仍继续踩动踏板②，直至缝纫机完全停下来为止。

Note

In case a clutch type motor is used, it will keep on rotating by inertia after turning off power supply. ①If the machine pedal ②is stepped on inadvertently, it is dangerous because the machine will move unexpectedly. keep on stepping on the pedal ② until the machine comes to a stop after turning off power supply.



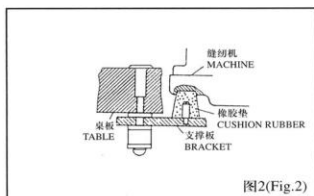
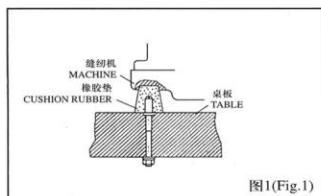
- 在离开缝纫机台时，务必请关掉电源。
- 停电时也请务必关掉电源。
- 为了总是安全地，运转良好的使用缝纫机，日常的点检是不可缺少的，请予以注意。
- Turn the power off before leaving the machine table.
- In the event of a power failure, be sure to turn the machine off.
- Check that the machine is securely grounded.

一、机器如何安装

1、依本机器所付桌板裁制图及零件组合图所列配件，依序安装防震机座及线架 (图1&2)

How to set up a machine

1、With referenceto diagrams for table cutting and mounting partlist,install vibration-reducing base and thread stand in sequence (Fig.1&2)



2、马达转向为顺时针方向，皮带的松紧度以手指向内压下20mm宜为，同时为安全起见，把皮带轮盖必须锁上。(图3&4)

2、Mount the machine head over the rest board Connect the machine hand wheel to the clutch motor with the V-belt. Adjust the tension of the V-belt so that it can be about 20 mm bent inward when you presse the center of V-belt and make sure the clutch motor turning direction is clockwise as shown Figure 3. Install the belt cover according to Figure 4.

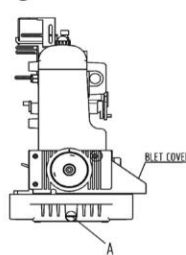


图3 (Fig.3)

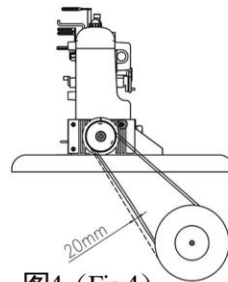


图4 (Fig.4)

3、皮带轮及缝纫转速，请参照 (表2)

3、Motor pulley size and sewing speed, please refer to table No2

表1 (Table.1)

| Machine Speed (s.p.m.) 转速 / 分 | Motor Pulley Outer Diameter (mm) | |
|-------------------------------------|----------------------------------|------|
| | 60Hz | 50Hz |
| 4,500 | 90 | 105 |
| 4,000 | 80 | 95 |
| 3,500 | 70 | 85 |

注意:

- 1、使用新机器最初一个月转速约为最高转速 (表1) 的80%，并请选择正确的马达皮带轮尺寸 (表1)。
- 2、桌板厚度为40mm。
- 3、马达规格：离合器马达，3相2级400W (1/2HP)。

Note:

- 1、New machine run a speed approximately 80% of the Maximum speed in the first month (table.1). Be sure to choose proper motor pulley for your machine.
- 2、Table top is 40mm thick.
- 3、Specification of motor: clutch motor 3, phase, 2 poles, 400W (1/2HP)

二、润滑油的注入与更换

新机器运装前均已将有倒尽

(1) 润滑油的注入 (图5&6)

●将螺丝A旋开，以包装箱内所附的超高速润滑油或选用MOBIL#10或AGIP等相当的机油加入，使油面处于油标两刻度线之间为好，然后在锁紧螺丝A；

●开箱新机器或久置未使用重新要用时，请在针棒、上钩针台等加油润滑。

(2) 润滑油的更换 (图3)

●将螺丝A放松旋开，使油完全排出后再锁紧；

●为延长本机器的寿命，请于开始使用四个星期更换新油后约四个月更换一次。

(3) 滤油器的更换 (图7)

●本机器特别装有滤油器，约每使用一个月后卸下清洗，必要时更换新品。

Lubricant oil filling and change

New machines are shipped out with empty chambers. please fill lubricant oil into new machines before run them.

1. Filling lubricant oil: (Fig.5&6)

● Loosen Knob (A) fill in with accompanied super-high-speed lubricant oil its equivalent such as Mobil#10 or #32, until the oil up be-fween two marks on Insicator (C)

2. Lubricant oil change: (Fig.3)

● Loosen Knob (A) drain oil from the tank, then tight it up.

● In order to p ro-long machine life. please change lubricant oil after 4 week of operation. There after, change oil every 4 months.

3. Replacing oil filter: (Fig.7)

● Our machines are equipped with oil filters. Take our the filters and clean them up every month. Replace with new filters if necessary.

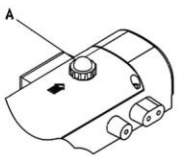


图5 (Fig.5)

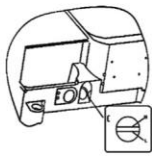


图6 (Fig.6)

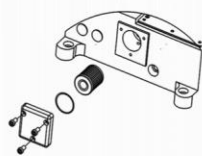


图7 (Fig.7)

三、针的更换

选用针的规格与尺寸请参照(表2)

For specification and sizes of needles, please refer to (table.2)

| NEEDLE SYSTEM 针 规格 | NEEDLE SIZE 针 番 号 |
|-----------------------|----------------------|
| SCHMETZ UY113GS | #70 - #160 |
| ORGAN Uo113 | #11 - #18 |

1. 拧下螺钉(A)并取下针。(图8)
2. 将新针插至含针孔最底端,并使针的凹面向自己。
3. 重新锁紧螺钉(A)。
4. 针与勾针有密切的关系。如果机针安装不正确,不但会引起跳针、断针会损伤勾针,务必注意。

How to replace needles

1. Loosen screw (A) and take out the used needle.(Fig.8)
2. Put new needle into the holder holes as they can go and left the long groove of needle face you and Fasten Screw (A)
3. Needle and loopers have close interaction.improper needle setting will skipping stitches,breaking Threads,and damaging loopers,please Pay fing attention to needle installation.

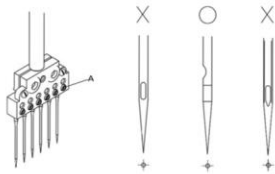


图8 (Fig.8)

四、穿线方法

1. 按照图示穿线, 错误穿线将引起断线、跳针或缝纫线迹不良等现象。
2. 在穿勾线时, 将勾线座引出轴沿箭头方向拉出使勾线座向前弹出, 然后进行穿线。(图10)

Threading

1. Refer to the sewing type you need for correct threading .Any incorrect threading may cause thread brake 、 uneven stitches or skip stitches. (Fig.9)
2. For looper threading ,pull out the lever of looper set the arron then thread properly .cause thread brake 、 uneven stitches or skip stitches. (Fig.10)

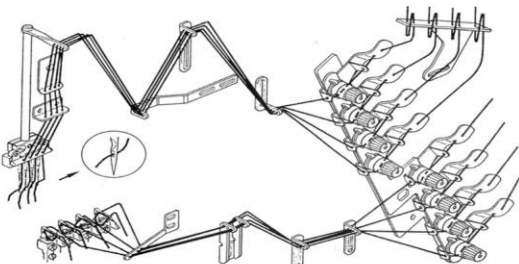


图9 (Fig.9)

五、控线的调整

1. 控线强弱必须根据车缝材料种类, 厚薄以及线与针距等不同来进行调整。
- 将控线钮顺时针旋转时越紧, 反之则越松。

2. 针控线杆的调整(图11)针线控线杆(B)根据缝线的种类来选择使用状态, 放松螺钉(A)将(B)上下移动调整, 在使用伸展性较大的缝线时将(B)上移, 则针孔处的线环就会变大, 利于勾线。

Thread tension adjustment

1. Thread tension should be adjusted in regarding to kinds of threads fabrics, thickness of fabrics ,and stitch length etc. (Fig.9)
- Turn thread knob clockwise for tighter tension and vice versa (Fig.11)
2. Adjustment.(Fig.12) The position for Needle thread Take-up Lever (B) is adjustable according to thread used. Loosen screw (A) ,move lever (B) up and down for the optimum position .For instance ,when using high extension thread ,move lever (B) upward to make a bigger needle thread loop for lower to chain easily.

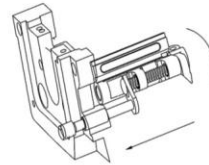


图10 (Fig.10)

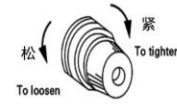


图11 (Fig.11)

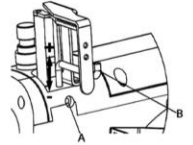


图12 (Fig.12)

六、机针高度调整

1. 当针杆上升至最高点时, 调整针尖与针板面的距离为 13 ± 0.5 mm。(图13)
2. 打开上方侧盖橡胶塞(A), 并松开螺钉(B), 上下调整机针高度后在固定螺钉。(图14)

注意:

机针高度调整后, 必须确定每一根针是通过针板孔中央。(图14)。

Needle position adjustment

1. Needle tip should be 13 ± 0.5 mm height from Needle plate when Needle Bar mores to its top position. (Fig.13)
2. The position of needle bar can be adjusted by [1] removing rubber cap (A) and loosening nut (B) ,[2] moving needle bar up and down ,to proper position and [3] tightening screw (B) ,and insert in cap (A). (Fig.14)

Note:

Be sure that every needle goes through the center of needle holes on Needle plate. (Fig.15)

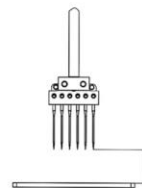


图13 (Fig.13)

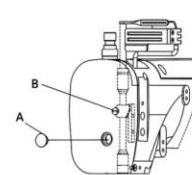


图14 (Fig.14)

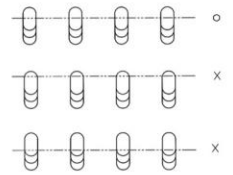


图15 (Fig.15)

七、护针的调整

拧松螺钉(A), 调整护针使与机针的间隙为 $0-0.1$ mm(图16)后再锁紧螺钉(A)。

Needle guide adjustment

Loosen screw (A) to allow a gap of $0-0.1$ mm between needles and needle Guide (Fig.16) then tighten screw (A)。

八、针与弯针的调整

1. 将弯针插入弯针架上, 并稍微锁紧螺钉(A)。图(16)
2. 转动手轮使针上升并使弯针尖向前至针的中心线。图(17)
3. 调整弯针尖与机针侧的间隙为 $0-0.5$ mm, 再锁紧螺钉(A)。

Adjustment between needles and loopers

1. Put Loopers into Looper holder with screw (A) slightly tightened. (Fig.16)
2. Tum pulley to move looper point up to the center line of needle.(Fig.17)
3. Adjust the gap between needle tip and looper tip to be $0-0.05$ mm ,Tighten screw (A) up.

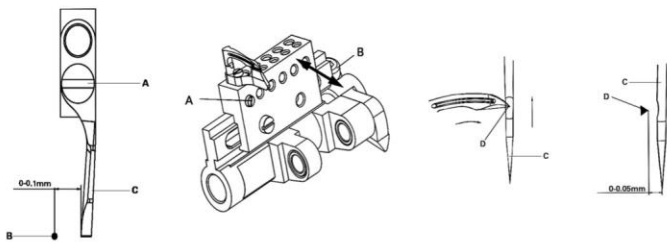


图16 (Fig.16)

图17 (Fig.17)

图18 (Fig.18)

九、弯针的调整

当机针位于最低点时，弯针尖端与针中心线之间的间隙为2.8mm(图19)调整时将弯针底座驱动杆固定螺钉(B)放松，前后调整弯针座后在锁紧螺钉(B)。(图17)

LOOPER ADJUSTMENT

When needles are at the bottom end position, the distance between looper tips and the center line of needles is 2.8mm. (Fig.19) To adjust the position of looper, first loosen nut (B) on looper Holder and move back and forth to the proper position. Then tighten nut (B). (Fig.17)

十、针杆上下运动与弯针的位置关系

针棒由最低点开始往上移，且弯针尖由后死点往前移至右边如(图20) (A)所示位置时，弯针尖由前死点位置往后移至针的右边如(图19) (B)所示位置，弯针即为正确位置。

调整时将弯针前后带动偏心凸轮(A) (图21)的固定螺钉(B)放松，前后调整偏心凸轮(A)的位置，向前移则针对弯针的时间较快，向后移则较慢。

Timing of needle and loopers movement

While needles move up from bottom end position and loopers also move forward from rear end position until looper point reach the right side edge of needle (Fig.20)(A), the looper point should be 1.5mm away from the top edge of needle eye.

While needles move down from top end position and loopers also move backward to front end position until same location as above shown on Fig.20(B). Looper point should be 3.0mm away from the top edge of needle eye. For adjustment by loosening screws (B) and move the position of Eccentric Cam (A) (Fig.21) back and forth, the speeds of needles and loopers. Movement can be adjusted slower or faster coordinately.

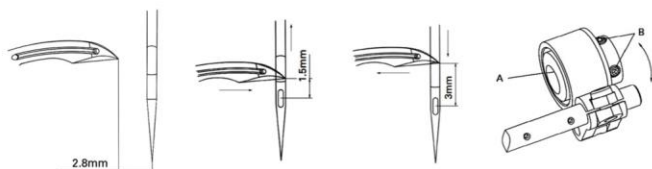


图19 (Fig.19)

图20 (Fig.20)

图21 (Fig.21)

十一、弯针与拨线杆的关系

当拨线杆(A)于左死点位置时，拨线杆(A)右端与弯针右端之间的间隙为0.5-1mm。(图23)而弯针与拨线杆(A)之间的间隙为0-0.1mm。(图24)

调整时:

- 1.先拧松在稍微锁紧拨线杆心轴固定螺钉(C) (图23)。
- 2.旋转手轮使拨线杆心轴连杆(D)移至左死点位置。
- 3.调整使符合上述条件、再锁紧螺钉(C)。

Interrelation of and thread weavers

When thread weavers are at the left dead end position, the right side of thread weavers is away from the right side of loopers by 0.5-1mm (Fig.23) And, the gap between loopers and Thread Weavers is 0-0.1mm (Fig.24).

For adjustment:

1. Loosen but slightly screw (C) on the shaft of thread weavers (Fig.23)
2. Turn belt pulley to move the lever of thread weavers (D) to left dead end.
3. Adjust loopers and thread weavers to meet all requirements mention above then tighten screw (C).

十二、拨线杆的固定

拨线杆(A)与机针间隙如(图22)所示为0.2-0.4mm，当针杆在下死点位置时，将固定螺钉(B) (图23)拧松，并调整拨线杆(A)至(图22)所示尺寸并注意各杆的平行，再锁紧螺钉。

Setting of thread weavers

The gap between thread weavers and needles is (Fig.22), about 0.2-0.4mm. Move needle bar to its low bottom end position then loosen screws (B) (Fig.23) and move thread weaver to position shown (Fig.22), then tighten screw (B). Be sure all Thread Weavers are paralleled when tightening screw (B).

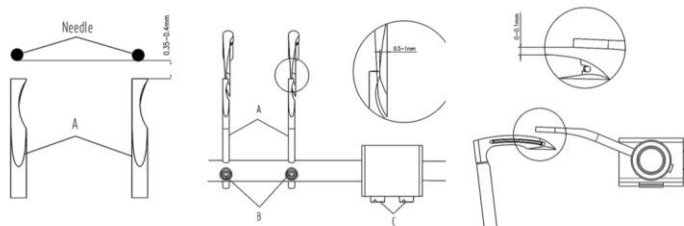


图22 (Fig.22)

图23 (Fig.23)

图24 (Fig.24)

十三、弯针线挑线量的调整

当针尖下降至弯针背面的中心位置时，弯针线挑线杆(A)也正好由下死点开始往上抬。

挑线量调整: 图(25)

1.先放松偏心凸轮(F)固定螺钉(C)前后调整至正确位置，再锁紧(C)，往前摆动快，往后摆动慢。

2.微调时，拧松螺钉(E)，将过线器(B)上下移动调整再锁紧螺钉(E)。线的出线量因所使用的线而异，其出线量为:

棉线，SP线: 7-10mm (D) (图26)。

伸缩尼龙线: 10-15 (D) (D) (图26)。

Adjustment of looper thread take-up

When the needles tip were moved down to the position of the center of loopers back, the looper thread take-up lever (A) starts to move upward from its bottom dead end.

For adjustment (Fig.25)

1. Loosen screw (C) to release eccentric cam (F) and move eccentric cam to a proper position, by turning forward for faster and backward for slower take-up motion, Then tighten screw.

2. For micro-adjustment: Loosen screw (E) and move Thread Guide (B) up and/or down to the proper position then tighten screw (E). The quantity of thread feeded varies with the kinds of thread.

For refence:

Cotton \$ sp headr: 7-10mm (D) (Fig.26)

Nylon thread : 10-15mm (Fig.26)

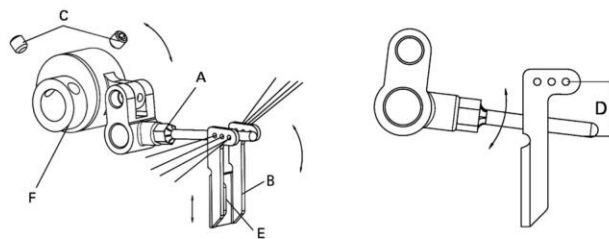


图25 (Fig.25)

图26 (Fig.26)

十四、送布牙的调整

送布牙(C)升至最高点时，送布牙齿顶与针板面的距离为0.8-1.5mm，平均为1.2mm。(图27)

送布牙的调整: (图28)

- 1.拧松送布牙(C)的固定螺钉(A)。
- 2.上下移动送布牙(C)使符合上述条件时，再锁紧螺钉(A)。
- 3.将高度固定销(D)的固定螺钉(B)松开，调整固定销直到送布牙的底部再锁紧螺钉(B)。(图28)
- 4.此时应该确认送布牙(C)左右方向的平行。

Feed dog adjustment

When feed dogs (C) move to the highest position, the distance from the tips of feed dogs to the face of Needle plate is 0.8-1.5mm. The average is 1.2mm (Fig.27). For adjustment: (Fig.28)

1. Loosen screw (A) on Feed Dog (C).
2. Move Feed Dog (C) up and/or down to meet above requirement then tighten screw (A).
3. Loosen screw (B) and move stop pin (D) upward to the bottom of Feed Dog (E), then tighten screw (B) (Fig.28)
4. Be sure to check the parallel among feed dogs.

十五、送布牙平行的调整

送布牙上升至最高时应与针板平行(图27)。调整: 夹紧螺栓(F), 将螺帽(G)放松, 调整送布牙螺钉(E), 使送布牙(C)与针板平行(图28)再锁紧螺帽(G)。

Feed dog's parallel adjustment

When the feed dogs are at the highest position they should be parallel to Needle plate surface (Fig.27). For adjustment: Holding screw nut (F) firmly and loosen screw (G) then to adjust screw (E) for the teeth surface of Feed Dogs, is paralleled needle plate (Fig.28)

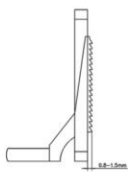


图27 (Fig.27)

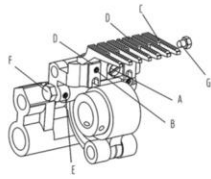


图28 (Fig.28)

十六、针距的调整

1. 压下针距调整按钮(A), 并转动手轮, 使按钮卡住针距调整组件, 再转动手轮到所需针距后, 放松此按钮。(图29)
2. 欲增大针距时, 将手轮往逆时针方向旋转, 反之则小, 调整针距时, 马达需在停止状态。

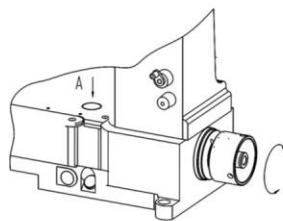


图29 (Fig.29)

Stitch length adjustment

1. Push stitch length regulator bottom (A) and turn pulley until the bottom lock in the stitch regulator. Then, turn pulley again to reach desired stitch length, then release the bottom (Fig.29).
2. Turn pulley clockwise for longer stitch length, vice versa. Be sure to turn off motor when adjusting.

十七、后拖轮的调整

当针杆由下极限位置往上移24mm, 后拉引轮开始转动, 即为正确的位置关系。

调整: (图30)

1. 拧松偏心凸轮(B)固定螺钉(A)后, 再稍微锁紧。
2. 旋转手轮至上述条件后, 再锁紧螺钉(A), 往前转则变快, 往后则变慢。

Rear puller adjustment

When needle bar moves upward from its dead bottom end about 24mm, the rear pulley cam starts moving. To adjust: (Fig.30)

1. Loosen screws (A) on eccentric cam (B) then tighten a little bit.
2. Turn pulley to have Needle Bar and rear puller reach their proper interrelated position. Then tighten screw (A). Turn eccentric cam forward to have faster motion. Vice versa.

十八、后拉引滚轮供给量的调整

1. 取下上盖, 拧松连杆(A)上的螺帽(B)。(图31)
2. 将连杆(A)前后移动, 往前移动(C方向)则供给量小, 往后移(D方向)则供给量大。
3. 微调时, 放松螺帽(A)将连杆(B)上下移动, 往上量多。(图32)

Feeding adjustment of rear puller

1. Take off cover and Release nut (B) on connector (A). (Fig.31)
2. Move connector (A) back and forth for more or less feeding length, toward (C) direction reduce feeding length.
3. For micro adjustment, release nut (A) and move connector (B) upward for longer and downward for shorter feeding length respectively. (Fig.32)

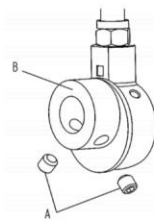


图30 (Fig.30)

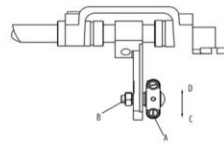


图31 (Fig.31)

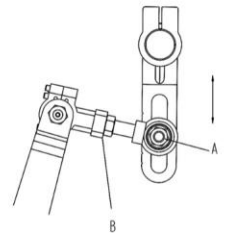


图32 (Fig.32)

十九、上下滚轮间隙的调整

上下滚轮的间隙: 将下滚轮放至下死点在自由状态时, 上滚轮与下滚轮的齿间隙为0.5mm (图33), 且两滚轮平行。调整:

1. 两滚轮平行调整: 将螺钉(A)放松, 调整两滚轮平行后, 稍紧螺钉(A)上下移动固定座(C), 使上下滑动顺畅, 再锁紧螺钉(A)。(图33)
2. 间隙0.5mm的调整: 如图(图34)所示, 调整螺钉(H), 使上下滚轮的间隙为0.5mm再锁紧螺帽(D) (图34) 稍放松螺钉(K)并调整连杆(J), 使螺钉(L)与连杆(J)的长圆孔下方的间隙为0.5mm, 再锁紧螺钉(K)。
3. 上滚轮压力的调整: 将压力调整螺钉(A)往顺时针方向转动, 则压力加大, 反之压力减小。(图35)

Gap adjustment of top and lower rollers

The teeth gap between top and lower rollers should be 0.5mm (Fig.33), when the lower roller is free and at its dead bottom end and parallel to the top roller.

To adjust:

1. Paralleling adjustment: Paralleling Loosen screw (A) and top and lower rollers parallel. Tighten screw (A) slightly and move frame Base (C) up and down to its smooth. The tighten screw (A). (Fig.33)
2. Gap referring (Fig.34): Loosen nut (D) and turn screw (H) to reach 0.5mm gap between top and lower rollers. Then tighten screw nut (D). (Fig.34) release screws (K) slightly and adjust connector (J) to keep the space between the bottom edge of screw (L) and the edge of slot on connector (J) at 0.5mm. Then tighten screw (K).
3. Pressure adjust: Turn pressure control knob (A) clockwise to increase the pressure of top roller, vice versa (Fig.35).

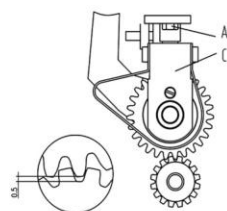


图33 (Fig.33)

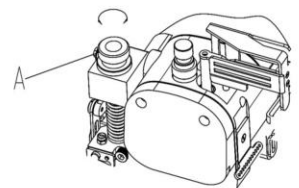


图35 (Fig.35)

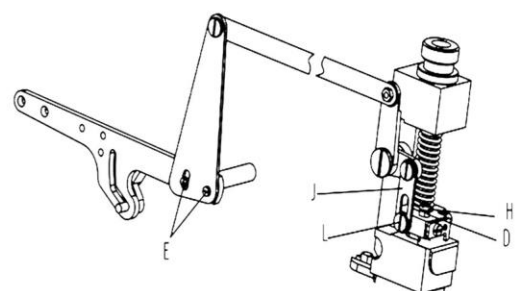


图34 (Fig.34)

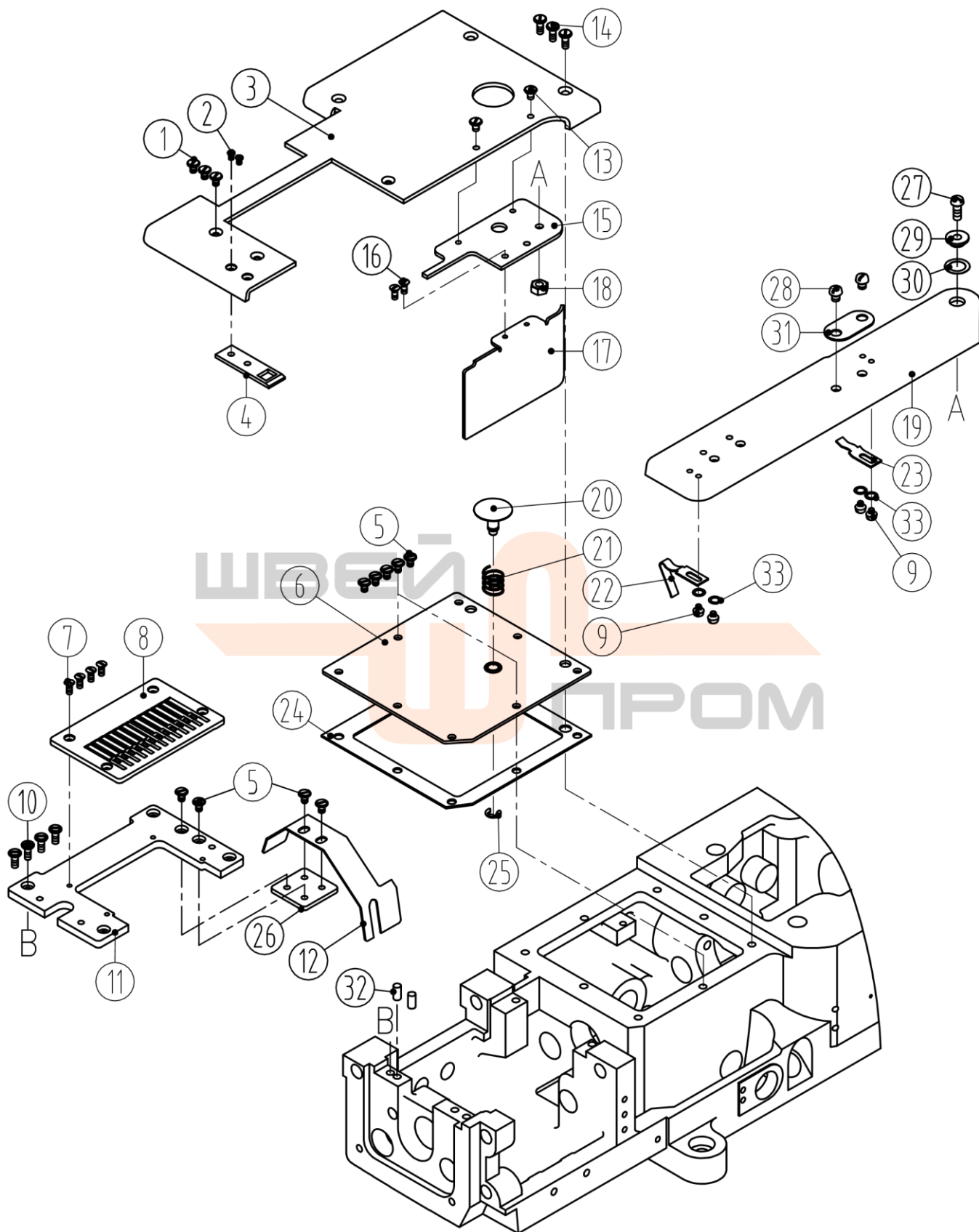


一、机壳部件/Frame assemblies

| 序号 No | 件号 Par No. | 参考件号 Ref.Part.No | 名称 | Description | 数量 Number | 备注 Remark |
|----------|---------------|---------------------|---|------------------|--------------|--------------------|
| 1 | 305S20001 | SM49E | 轴位螺钉 M4 | Screw | 1 | |
| 2 | 30528001 | KP60 | 波形弹性垫圈 $\phi 6.4 \times \phi 11 \times 0.3$ | Washer | 1 | GB/T955 |
| 3 | 30512001 | DA80 | 断针防护罩架 | Eye Guide Assy. | 1 | |
| 4 | 30511001 | KC69 | 断针防护罩 (4 针) | Eye Guide Assy. | 1 | 4 针机专用 |
| 5 | S04016 | SM132 | 复合槽圆柱头螺钉 M3.5 \times 6 | Screw | 2 | |
| 6 | 20131063 | MA84 | 警告牌 | Brand | 1 | |
| 7 | 113S11004 | SM433 | 开槽圆柱头螺钉 M4 \times 8 | Screw | 5 | |
| 8 | 30512002 | MA79 | 断针防护罩架座 | Guide | 1 | |
| 9 | P03025 | PM413 | 弹性圆柱销 $\phi 4 \times 12$ | Pin | 1 | GB/T879.1 |
| 10 | 30512003 | VA19P | 针杆上挑线防护罩座 (喷漆) | Eye Guide Assy. | 1 | 300215 |
| 11 | 30512004 | MA82 | 针杆上挑线防护罩 (喷漆) | Eye Guide Assy. | 1 | 300216 |
| 12 | 30526001 | PM404 | 抬压复位拉簧销 | Pin | 1 | $\phi 4 \times 28$ |
| 13 | 30501005 | VA01 | 机座 | Lower Macine | 1 | 100205 |
| 14 | 201S17003 | SM152 | 开槽沉头螺钉 SM1/8 " \times 44 | Screw | 2 | |
| 15 | S05001 | ----- | 内六角圆柱头螺钉 M10 \times 30 | Screw | 4 | GB/T70.1 |
| 16 | P02001 | ----- | 销 | Pin | 2 | |
| 17 | 30522001 | KH48 | 橡皮塞 $\phi 9.2$ | Oil Seal | 1 | |
| 18 | S04019 | SM44B | 十字槽盘头螺钉 M4 \times 12 | Screw | 10 | GB/T818 |
| 19 | 13837002 | VA06 | 商标 | Brand | 1 | |
| 20 | 30322009 | KH48 | 橡皮塞 $\phi 12.2$ | Oil Seal | 3 | |
| 21 | 30501047 | VA05 | 机头左盖 (喷漆) | Left Cover | 1 | 300217 |
| 22 | 30501049 | VA04 | 机头左盖密封垫 | sticker | 1 | |
| 23 | 30522004 | VA24 | 机座右盖橡皮塞 $\phi 31.1$ | Oil Seal | | |
| 24 | 30522003 | VA24 | 机座右盖密封垫 | sticker | 1 | |
| 25 | 30501002 | VA25 | 机座右盖 (喷漆) | Left Cover | 1 | 300218 |
| 26 | 30522005 | VA25-2 | 机座右盖橡皮垫 | sticker | 1 | |
| 27 | 305S12002 | SM416 | 内六角圆柱头螺钉 M4 \times 30 | Screw | 7 | GB/T70.1 非直驱配备 |
| 28 | 30511003 | VA07P | 断针防护罩(6-25 针) | Eye Guide Assy. | 1 | 6-25 针专用 |
| 29 | 20111005 | KC57 | 油窗 | Oil Sight Window | 1 | |
| 30 | 20122018 | KC58 | 油窗密封垫 | sticker | 1 | |
| 31 | 30512085 | VA06 | 挑线过线板防护罩 (4 针) | Eye Guide Assy. | 1 | 4 针机专用 |
| 31 | 30512086 | VA06 | 挑线过线板防护罩 (6-25 针) | Eye Guide Assy. | 1 | 6-25 针机专用 |
| 32 | 305S20003 | SM670 | 机头支撑螺钉 M6 \times 11 | Screw | 4 | |
| 33 | 30501048 | VA02 | 上盖 (喷漆) | Top Cover | 1 | 301812 |
| 34 | 30522024 | A03 | 上盖密封圈 | Oil Seal | 1 | |
| 35 | 30501051 | VA08 | 机头 | Upper Macine | 1 | 100202 |
| 36 | 30537003 | VA26 | 机型牌 | Brand | 1 | |

| | | | | | | |
|----|----------|------|----------|------------------|---|-------|
| 37 | R03001 | KA33 | 铆钉 2.5*4 | Screw | 1 | |
| 38 | 30511002 | VA23 | 带轮盖 | Belt Cover Assy. | 1 | 非直驱配备 |

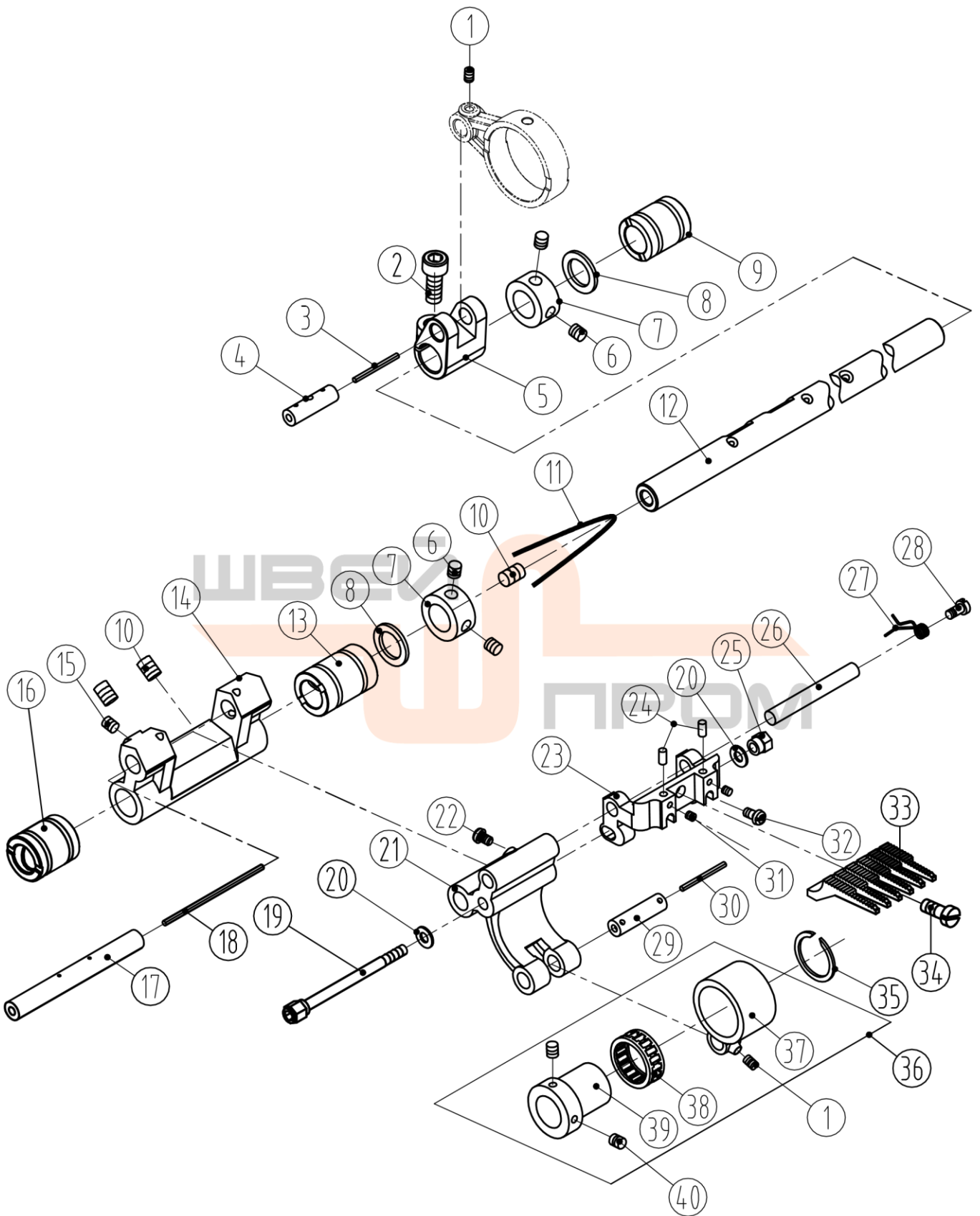




二、缝台盖部件/Cloth Plate assemblies

| 序号 No | 件号 Par No. | 参考件号 Ref.Part.No | 名称 | Description | 数量 Number | 备注 Remark |
|----------|---------------|---------------------|----------------------------|-------------------|--------------|---------------|
| 1 | S03002 | SM496 | 开槽半沉头螺钉 M3×3.5 | Screw | 3 | |
| 2 | S02007 | SM152 | 开槽沉头螺钉 M3×5 | Screw | 2 | |
| 3 | 30512067 | VB07 | 后缝台组件 | Cloth Plate Cover | 1 | |
| 4 | 30512008 | VB12 | 前缝台限位板 | Carko | 1 | |
| 5 | L02003 | SM433 | 六角头螺栓 M4×7 | Screw | 7 | |
| 6 | 30512009 | VB02 | 缝台下防油盖板组件 | Cover | 1 | 组件 30512009 |
| 6 | 30512059 | VB02 | 防油盖板 | Cover | 1 | |
| 6 | 30503037 | VB02 | 针距调节按钮套 | Cover | 1 | |
| 7 | 301S17001 | SM160 | 开槽半沉头螺钉 SM9/64"×40×6.7(进口) | Screw | 4 | |
| 8 | 30515009 | E9xxx | 针板 (04064) | Needle Plate | 1 | |
| 8 | 30515019 | E9xxx | 针板 (04080) | Needle Plate | 1 | |
| 8 | 30515001 | E9xxx | 针板 (04085) | Needle Plate | 1 | |
| 8 | 30515013 | E9xxx | 针板 (04095) | Needle Plate | 1 | |
| 8 | 30515012 | E9xxx | 针板 (06048) | Needle Plate | 1 | |
| 8 | 30515003 | E9xxx | 针板 (06064) | Needle Plate | 1 | |
| 8 | 30515011 | E9xxx | 针板 (06080) | Needle Plate | 1 | |
| 8 | 30515051 | E9xxx | 针板 (06095) | Needle Plate | 1 | |
| 8 | 30515015 | E9xxx | 针板 (08032) | Needle Plate | 1 | |
| 8 | 30515021 | E9xxx | 针板 (08048) | Needle Plate | 1 | |
| 8 | 30515004 | E9xxx | 针板 (08064) | Needle Plate | 1 | |
| 8 | 30515017 | E9xxx | 针板 (08085) | Needle Plate | 1 | |
| 8 | 30515018 | E9xxx | 针板 (12032) | Needle Plate | 1 | |
| 8 | 30515010 | E9xxx | 针板 (12048) | Needle Plate | 1 | |
| 8 | 30515002 | E9xxx | 针板 (12064) | Needle Plate | 1 | |
| 8 | 30515005 | E9xxx | 针板 (13064-32) | Needle Plate | 1 | |
| 8 | 30515006 | E9xxx | 针板 (17032) | Needle Plate | 1 | |
| 8 | 30515016 | E9xxx | 针板 (23032) | Needle Plate | 1 | |
| 8 | 30515008 | E9xxx | 针板 (25032) | Needle Plate | 1 | |
| 9 | S01073 | SM130 | 开槽圆柱头螺钉 M3.5×3 | Screw | 4 | |
| 10 | S01005 | SM433 | 开槽圆柱头螺钉 M4×10 | Screw | 4 | |
| 11 | 30512021 | VB07 | 针板座 | Bracket | 1 | |
| 12 | 3052200600 | VB18 | 打线杆防油板组件 | Feed Bar Oil Seal | 1 | 组件 3052200600 |
| 12 | 30512018 | VB18 | 打线杆防油板 | Cover | 1 | |
| 12 | 30522007 | VB18 | 打线杆防油板橡胶块 | Cover | 1 | |
| 13 | 305S11005 | SM152 | 开槽圆柱头螺钉 SM9/64"×40×4 | Screw | 2 | |

| | | | | | | |
|----|-----------|--------|--|------------|---|-------|
| 14 | S01038 | SM435 | 开槽球面圆柱头螺钉 M4×10 | Screw | 3 | |
| 15 | 30512011 | VB11 | 前后缝台连接板 | Sheet Iron | 1 | |
| 16 | 301S17001 | SM160 | 开槽半沉头螺钉 SM9/64"×40×6.7(进口) | Screw | 4 | 通 2-7 |
| 17 | 30512012 | VB11-1 | 缝台前罩板 | Bland | 1 | |
| 18 | N01004 | NM511 | 螺母 M5 | Nut | 1 | |
| 19 | 30512066 | VB14 | 前缝台 | Side Cover | 1 | |
| 20 | 30502001 | VB04 | 针距调节按钮 | Button | 1 | |
| 21 | 30527001 | VB03 | 针距调节按钮复位弹簧 | Spring | 1 | |
| 22 | 30512014 | VB15 | 前缝台左卡簧 | KaKo | 1 | |
| 23 | 30512017 | VB16 | 前缝台右卡簧 | KaKo | 1 | |
| 24 | 30522012 | VB01 | 缝台下防油盖板密封垫 | Washer | 1 | |
| 25 | 11329020 | EM050 | 开口挡圈 5 | Ring | 1 | |
| 26 | 30512015 | VB19 | 打线杆防油板固定板 | Bland | 1 | |
| 27 | S01059 | SM534 | 开槽球面圆柱头螺钉 M5×13 | Screw | 1 | |
| 28 | S01060 | SM630 | 开槽圆柱头螺钉 M6×10 | Screw | 1 | |
| 29 | 30503001 | VB13 | 前缝台旋转垫圈 | Washer | 1 | |
| 30 | 30528002 | WMA40 | 波形弹性垫圈 $\phi 11 \times \phi 14.6 \times 0.3$ | Washer | 2 | |
| 31 | 30512016 | VB17 | 卷边龙头压板 | Washer | 1 | |
| 32 | P01001 | ----- | 针板架定位销 $\phi 5 \times 13$ | Pin | 2 | |
| 33 | W01005 | | 垫圈 3 | Washer | 4 | |



三、送料部件/Feed assemblies

| 序号 No | 件号 Part No. | 参考 件号 Ref.Part.No | 名称 | Description | 数量 Number | 备注 Remark |
|----------|----------------|-------------------------|--|-------------|--------------|--------------|
| 1 | 305S14003 | SM103 | 内六角锥端紧定螺钉 M3.5×5 | Screw | 2 | |
| 2 | S05002 | | 0.75×15.2 | | 1 | |
| 3 | 20123021 | | | | | |
| 4 | 30526002 | VC08 | | | | |
| 5 | 30504001 | | | | | |
| 6 | S10014 | | | 4 | 4 | |
| 7 | 30508001 | MH73 | 挡圈 $\phi 12 \times \phi 20 \times 10$ | | | |
| 8 | 20128031 | | 垫圈 $\phi 12.1 \times \phi 18 \times 1.5$ | | | |
| 9 | 30503002 | | | | | |
| 10 | S09002 | | | 6 | 3 | |
| 11 | 20123021 | | | | | |
| 12 | 30502002 | | | | | |
| 13 | 30503004 | | | | | |
| 14 | 30504002 | | | | | |
| 15 | 305S14001 | | | 40×5 | 1 | |
| 16 | 30503005 | | | | | |
| 17 | 30502003 | | | | | |
| 18 | 20123021 | | | | | |
| 19 | 305S12003 | | | | | |
| 20 | W01006 | | 垫圈 $\phi 4.6 \times \phi 10 \times 0.8$ | | | |
| 21 | 30504003 | | | | | |
| 22 | S01061 | | | M3.5×5 | 1 | |
| 23 | 30506001 | VC16D | | | | |
| 24 | 30526005 | PM301 | | | | |
| 25 | 305S16001 | | | 40 | 1 | |
| 26 | 30526006 | VC18D | | | | |
| 27 | 30527002 | | | | | |

28

305S20004

| | | |
|--------------------|----------|---|
| 内六角圆柱头螺钉M6× | Screw | |
| 油线 | Oil Wick | 1 |
| 送布曲柄销 | Pin | 1 |
| 送布曲柄 | Crank | 1 |
| 内六角凹端紧定螺钉M5× | Screw | |
| | Ring | 2 |
| | Washer | 2 |
| 送料轴右轴套 | Sleeve | 1 |
| 内六角平端紧定螺钉M6× | Pin | |
| 油线 | Oil Wick | 1 |
| 送料轴 | Shaft | 1 |
| 送料轴中轴套 | Bushing | 1 |
| 牙架曲柄 | Crank | 1 |
| 内六角锥端紧定螺钉SM11/64"× | Screw | |
| 送料轴左轴套 | Bushing | 1 |
| 牙架曲柄轴 | Pin | 1 |
| 油线 | Oil Wick | 1 |
| 牙架固定螺钉 | Screw | 1 |
| | Washer | 2 |
| 牙架座 | Feed Bar | 1 |
| 开槽圆柱头螺钉 | Screw | |
| 牙架 | Feed | 1 |
| 送布牙顶销 | Pin | 2 |
| 螺母SM11/64"× | Nut | |
| 牙架轴 | Pin | 1 |
| 送布复位扭簧 | Spring | 1 |
| 轴位螺钉 | Screw | |
| 抬牙连杆销 | Pin | 1 |
| 油线 | Oil Wick | 1 |
| 内六角平端紧定螺钉SM1/8"× | Screw | |
| 开槽球面圆柱头螺钉SM1/8"× | Screw | |
| 牙齿() | Feed Dog | |
| 牙齿() | Feed Dog | |
| 牙齿() | Feed Dog | |
| 牙齿() | Feed Dog | |
| 牙齿() | Feed Dog | |
| 牙齿() | Feed Dog | |
| 牙齿() | Feed Dog | |
| 牙齿() | Feed Dog | |
| 牙齿() | Feed Dog | |
| 牙齿() | Feed Dog | |
| 牙齿() | Feed Dog | |
| 牙齿() | Feed Dog | |
| 牙齿() | Feed Dog | |
| 牙齿() | Feed Dog | |
| 牙齿() | Feed Dog | |
| 牙齿() | Feed Dog | |
| 牙齿() | Feed Dog | |
| 牙齿() | Feed Dog | |
| 开槽圆柱头螺钉SM11/64"× | Screw | |
| | Spring | |
| 抬牙连杆组件 | Felt | 1 |
| 抬牙连杆 | Eccent | 1 |

29

30526003

VC21

30

20123021

31

305S14002

44×3

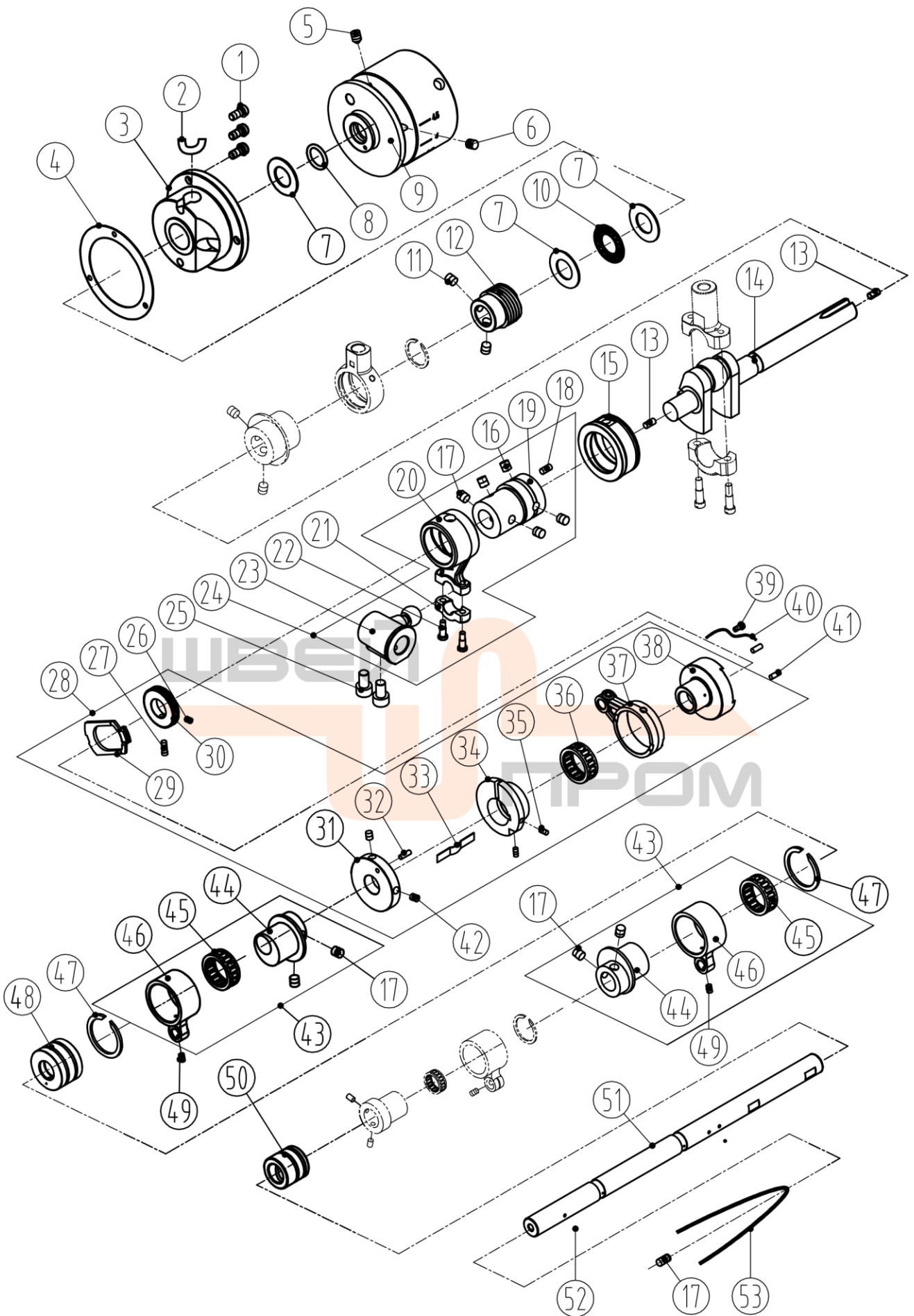
1

2

| | | | | | | |
|----|------------|------|--|--------|---------|---|
| 32 | S01062 | | | 44×6.5 | | 1 |
| 33 | 30514009 | | 04064 | | | 1 |
| 33 | 30514020 | | 04080 | | | 1 |
| 33 | 30514001 | | 04085 | | | 1 |
| 33 | 30514013 | | 04095 | | | 1 |
| 33 | 30514012 | | 06048 | | | 1 |
| 33 | 30514003 | | 06064 | | | 1 |
| 33 | 30514011 | | 06080 | | | 1 |
| 33 | 30514024 | | 06095 | | | 1 |
| 33 | 30514015 | | 08032 | | | 1 |
| 33 | 30514022 | | 08048 | | | 1 |
| 33 | 30514004 | | 08064 | | | 1 |
| 33 | 30514018 | | 08085 | | | 1 |
| 33 | 30514019 | | 12032 | | | 1 |
| 33 | 30514010 | | 12048 | | | 1 |
| 33 | 30514002 | | 12064 | | | 1 |
| 33 | 30514005 | | 13064-32 | | | 1 |
| 33 | 30514006 | | 17032 | | | 1 |
| 33 | 30514017 | | 23032 | | | 1 |
| 33 | 30514008 | | 25032 | | | 1 |
| 34 | 305S11001 | | 40×12 | | | 1 |
| 35 | 30508004 | VC23 | 无耳挡圈 $\phi 17.5 \times \phi 20.5 \times 1.1$ | | | 1 |
| 36 | 3051000100 | | | | | |
| 37 | 30505001 | | | | | |
| 38 | 30524001 | VC24 | 滚针轴承 K18×22×15.7 | | Bearing | 1 |
| 39 | 30510001 | VC25 | 拾牙偏心凸轮 | | Eccent | 1 |
| 40 | 201S14002 | | 内六角凹端紧定螺钉 SM11/64"×40×5 | | Screw | 2 |

组件
3051000100





四、主轴部件/Crankshaft Drive assemblies

| 序号 No | 件号 Part No. | 参考件号 Ref.Part.No | 名称 | Description | 数量 Number | 备注 |
|----------|----------------|---------------------|--------------------------|----------------------|--------------|-------------------|
| 1 | S01011 | SM532 | 开槽圆柱头螺钉 M5×10 | Screw | 3 | |
| 2 | 30523006 | VD02-2 | 后主轴右轴套油毡 | Felt | 1 | |
| 3 | 3050300600 | VD02 | 后主轴右轴套组件 | Bearing Cover | 1 | 400085 |
| 3-1 | 30503007 | | 轴承盖 | Bearing Cover | 1 | 组 件 3050300600 |
| 3-2 | 30503008 | | 后主轴右轴套 | Bearing Cover | 1 | |
| 4 | 30522008 | VD05 | 后主轴右轴套密封垫 | Washer | 1 | |
| 5 | S12001 | SM604 | 内六角锥端紧定螺钉 M6×8 | Screw | 1 | |
| 6 | S09007 | | 内六角平端紧定螺钉 M6×8 | Screw | 1 | |
| 7 | 30528003 | VD03-2 | 垫圈φ15×φ27.8×1 | Washer | 3 | |
| 8 | 30522020 | MD25 | O型圈φ13.6×φ18.4×φ2.4 | Oil Seal | 1 | |
| 9 | 30535001 | VD01 | 皮带轮(喷漆) | Machine Pulley | 1 | 300222 |
| 10 | 30524002 | VD03-1 | 平面滚针轴承φ15×φ28×1.4 | Bearing | 1 | |
| 11 | S10029 | SM602 | 内六角凹端紧定螺钉 M6×0.75×5 (进口) | Screw | 2 | |
| 12 | 30525001 | VD04 | 蜗杆 | Worm | 1 | |
| 13 | 30222003 | VD07-1 | 堵头 | Pin | 2 | |
| 14 | 30502004 | VD07 | 后主轴 | Crank Assembly | 1 | 400056 |
| 15 | 30503009 | VD08 | 后主轴左轴套 | Bushing | 1 | |
| 16 | S09002 | SM606 | 内六角平端紧定螺钉 M6×6 | Screw | 4 | |
| 17 | S09010 | SM602 | 内六角平端紧定螺钉 M6×5 | Screw | 5 | GB/T77 |
| 18 | P01007 | PM401 | 销子 | Pin | 1 | 组 件 3050402300 |
| 19 | 30510002 | VD09 | 喂针摆动偏心凸轮 | Eccent | 1 | |
| 20 | 30505003 | | 喂针摆动球连杆杆部 | Crank Assembly | 1 | |
| 21 | 30505004 | | 喂针摆动球连杆头部 | Crank Assembly | 1 | |
| 22 | 305S14008 | SM139 | 螺钉 | Screw | 2 | |
| 23 | 30504010 | VE42 | 喂针摆动球曲柄 | Crank | 1 | |
| 24 | 3050402300 | | 喂针摆动球连杆组件 | Crank Assembly | 1 | |
| 25 | 305S13006 | SM610 | 内六角圆柱头螺钉 M6×0.75×10 | Screw | 2 | |
| 26 | 305S14009 | | 内六角平端紧定螺钉 M3.5×5 | Screw | 1 | |
| 27 | 305S14010 | | 开槽圆柱头螺钉 M3.5×8 | Screw | 1 | |
| 28 | 3050502100 | | 送布连杆组件 | Deliver Fabric Assy. | 1 | 组件 3050502100 |
| 29 | 30509020 | KP74 | 针距调节滑块 | Ratchet | 1 | |
| 30 | 30525015 | VD46 | 针距调节齿轮 | Gear Wheel | 1 | |

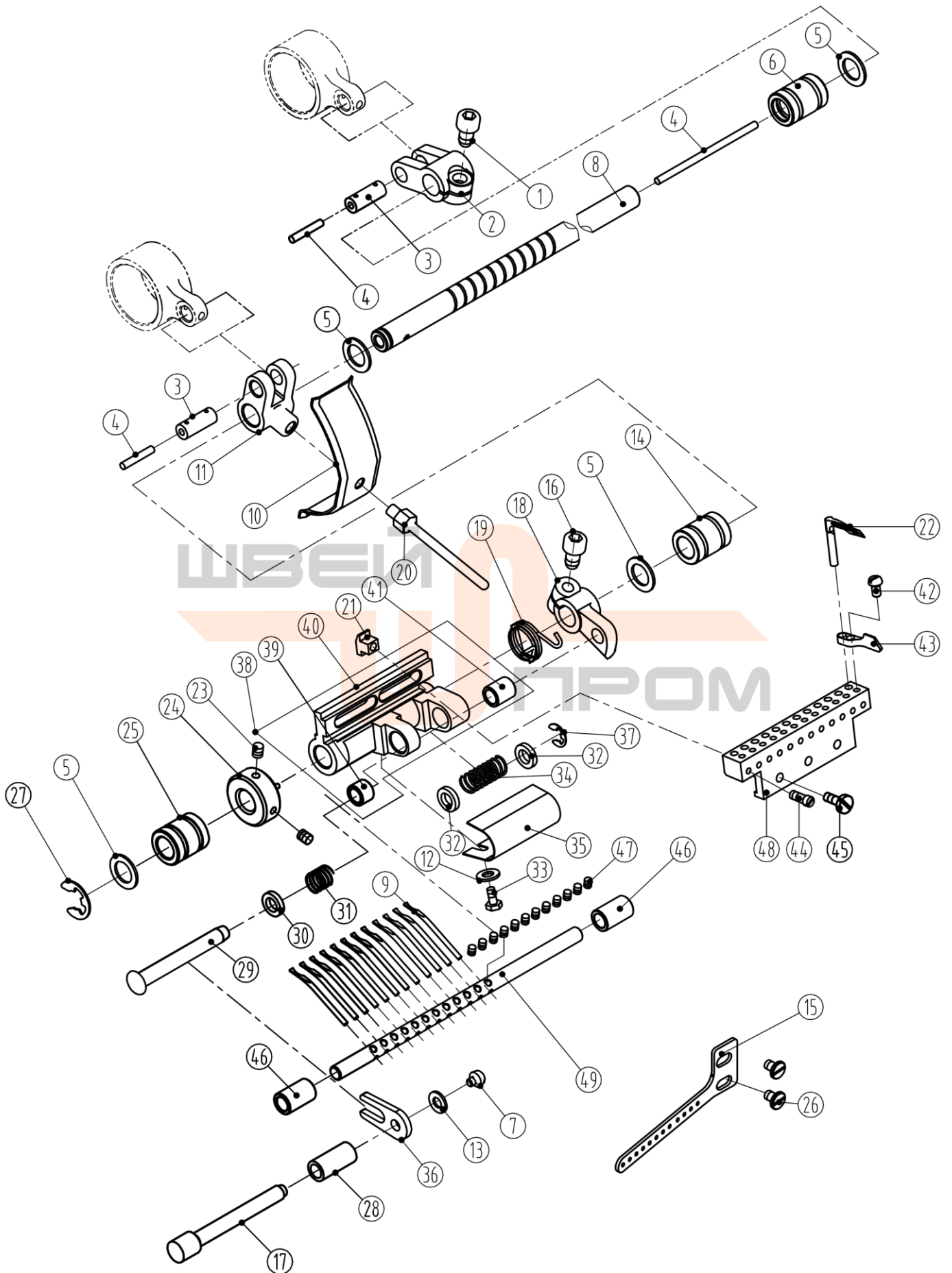
| | | | | | | |
|----|------------|---------|--|-----------------|---|------------------|
| 31 | 30510016 | VD47 | 送布固定轮 | Deliver Wheel | 1 | |
| 32 | 30526030 | KP18-1 | 送布凸轮定位销 | Pin | 1 | |
| 33 | 30508010 | | 送布凸轮弹簧片 | Spring | 1 | |
| 34 | 30510017 | VD44 | 送布凸轮 | Cam | 1 | |
| 35 | 413S14004 | | 内六角平端紧定螺钉 M3×4 | Screw | 2 | |
| 36 | 30524005 | | 滚针轴承 K32×28×10 | Bearing | 1 | |
| 37 | 30505024 | VD45 | 送布连杆 | Link | 1 | |
| 38 | 30510018 | VD43 | 针距调节凸轮 | Cam | 1 | |
| 39 | S01024 | | 轴位螺钉 SM1/8"×44 | Screw | 1 | |
| 40 | 30527011 | | 针距调节滑块复位扭簧 | Spring | 1 | |
| 41 | S07001 | | 轴肩螺钉 M3 | Screw | 2 | |
| 42 | 201S14002 | | 内六角凹端紧定螺钉 SM11/64"×40 | Screw | 2 | |
| 43 | 3051000500 | | 偏心凸轮组件 | Eccent Assembly | 2 | 组件 3051000500 |
| 44 | 30510005 | | 偏心凸轮 | Eccent | 2 | |
| 45 | 30524004 | | 滚针轴承K28X24X15.5 | Bearing | 2 | |
| 46 | 30505006 | | 连杆 | Rod | 2 | |
| 47 | 30508003 | VD26 | 卡簧 $\phi 22 \times \phi 25.4 \times 1.2$ | Spring | 2 | |
| 48 | 30503011 | VD27 | 前主轴右轴套 | Bushing | 1 | |
| 49 | 305S14003 | SM103 | 内六角锥端紧定螺钉 M3.5×5 | Screw | 3 | |
| 50 | 30503010 | VD28 | 前主轴左轴套 | Bushing | 1 | |
| 51 | 30502005 | VD29 | 前主轴 | Shaft | 1 | |
| 52 | 20123021 | VD30D-2 | 油线 | Felt | 2 | |
| 53 | 12923050 | VD30D | 油线 | Oil Wick | 1 | |



五、勾线部件/Thread Takeup assemblies

| 序号 No | 件号 Part No. | 参考件号 Ref.Part.No | 名称 | Description | 数量 Number | 备注 Remark |
|----------|----------------|---------------------|-------------------------|-------------------|--------------|---------------|
| 1 | 305S13006 | SM610 | 内六角圆柱头螺钉 M6×0.75×10 | Screw | 1 | |
| 2 | 30504004 | VE01 | 弯针架座摆动曲柄 | Crank | 1 | |
| 3 | 30526008 | VF10 | 销子 | Pin | 2 | 组件 3050500900 |
| 4 | 20123021 | VC11 | 油线 | Oil Wick | 1 | |
| 5 | 20128010 | KL11 | 垫圈φ10.2×φ16×1 | Washer | 4 | |
| 6 | 30503012 | VE09S | 弯针架座轴右轴套 | Bushing | 1 | |
| 7 | 206S11003 | SM130 | 开槽圆柱头螺钉 SM9/64"×40×7.5 | Screw | 1 | |
| 8 | 30502006 | VE04 | 弯针架座轴 | Shaft | 1 | |
| 9 | 30517003 | VE30 | 前拔线喂针 | Spreader | 4 | |
| 10 | 30512024 | VE10D | 挡油板 | Feed Bar Oil Seal | 1 | |
| 11 | 30504005 | VE05 | 打线杆曲柄 | Crank | 1 | |
| 12 | W01005 | WM100 | 垫圈 3 | Washer | 1 | GB/T97.1 |
| 13 | W02002 | | 弹簧垫圈 4 | Washer | 1 | GB/T93 |
| 14 | 30503013 | VE03S | 弯针架座轴中轴套 | Bushing | 1 | |
| 15 | 30513001 | VE32 | 弯针过线板 (4 针) | Thread guide | 1 | 4 针机专用 |
| 15 | 30513002 | VE32 | 弯针过线板 (6-13 针) | Thread guide | 1 | 6-13 针机用 |
| 15 | 30513028 | VE32 | 弯针过线板 (17-25 针) | Thread guide | 1 | 17-25 针机用 |
| 16 | S05004 | SM511 | 内六角圆柱头螺钉 M5×14 | Screw | 1 | GB/T70.1 |
| 17 | 30502007 | VE23 | 弯针架座倒前拉杆 | Adjusting Bar | 1 | |
| 18 | 30504006 | VE07 | 弯针架座右挡圈 | Crank | 1 | |
| 19 | 30527004 | VE08 | 弯针架座复位扭簧 | Spring | 1 | |
| 20 | 305S30002 | VE06 | 打线杆 | Thread Takeup | 1 | |
| 21 | 30509004 | VE45 | 弯针架左右调节块 | Nut | 2 | |
| 22 | 30517002 | VE51 | 弯针 | looper | 1 | 每台数量需乘相应机型针数 |
| 22 | 30517006 | VE51 | 弯针(032 用) | looper | 1 | 每台数量需乘相应机型针数 |
| 23 | 201S14002 | SK270 | 内六角凹端紧定螺钉 SM11/64"×40×5 | Screw | 2 | |
| 24 | 3050800400 | VE13D | 弯针架座左挡圈组件 | Coller | 1 | |
| 24 | 30508005 | | 弯针架座左挡圈 | Coller | 1 | 组件 3050800400 |
| 24 | 30526009 | | 销 2×10 | Pin | 1 | |
| 25 | 30503014 | VE14S | 弯针架座轴左轴套 | Bushing | 1 | |
| 26 | 113S11004 | SM431 | 开槽圆柱头螺钉 M4×8 | Screw | 2 | GB/T65 |
| 27 | H05011 | EM090 | 开口挡圈 9 | Spring | 1 | GB/T896 |
| 28 | 30503018 | VE27S | 弯针架座倒前拉杆轴套 | Bushing | 1 | |
| 29 | 30526022 | VE15 | 弯针架座倒前离合轴 | Link | 1 | |
| 30 | 30528006 | VE16 | 垫圈φ6.6×φ11×2.2 | Washer | 1 | |
| 31 | 30527006 | VE17 | 弯针架座倒前拉杆左弹簧 | Spring | 1 | |
| 32 | 11628004 | | 垫圈φ7.5×φ12×1 | | 2 | |

| | | | | | | |
|----|------------|-------|-------------------------|--------------|---|---------------|
| 33 | 305S12005 | SM331 | 六角头螺栓 SM1/8"×44×7 | Screw | 1 | |
| 34 | 30527005 | VE21 | 弯针架座倒前拉杆弹簧 | Spring | 1 | |
| 35 | 30512025 | VE25 | 弯针架座护线罩 | Bland | 1 | |
| 36 | 30512026 | VE24 | 弯针架座倒前拉杆牙叉 | Washer | 1 | |
| 37 | 11329020 | EM060 | 开口挡圈 5 | Spring | 1 | GB/T896 |
| 38 | 3050403100 | VE11 | 弯针架固定座组件 | Rivit Seat | 1 | 组件 3050403100 |
| 39 | 30503016 | VE18S | 弯针架固定座左轴套 | Bushing | 1 | |
| 40 | 30504007 | VE11 | 弯针架固定座 | Rivit Seat | 1 | |
| 41 | 30503015 | VE22S | 弯针架固定座右轴套 | Bushing | 1 | |
| 42 | S01062 | SK213 | 开槽球面圆柱头螺钉 SM1/8"×44×6.5 | Screw | 1 | 每台数量需乘相应机型针数 |
| 43 | 30517001 | VE49 | 护针 | Needle Guard | 1 | 每台数量需乘相应机型针数 |
| 43 | 30517008 | VE50 | 护针 (13 针) | Needle Guard | 1 | |
| 44 | 305S11002 | SK532 | 开槽圆柱头螺钉 SM9/64"×40×8.5 | Screw | 1 | 每台数量需乘相应机型针数 |
| 45 | 206S11002 | SK237 | 开槽圆柱头螺钉 SM9/64"×40×10 | Screw | 2 | |
| 46 | 30503017 | VE28S | 喂针轴轴套 | Bushing | 2 | |
| 47 | 305S14002 | SK329 | 内六角平端紧定螺钉 SM1/8"×44×3 | Screw | 1 | 每台数量需乘相应机型针数 |

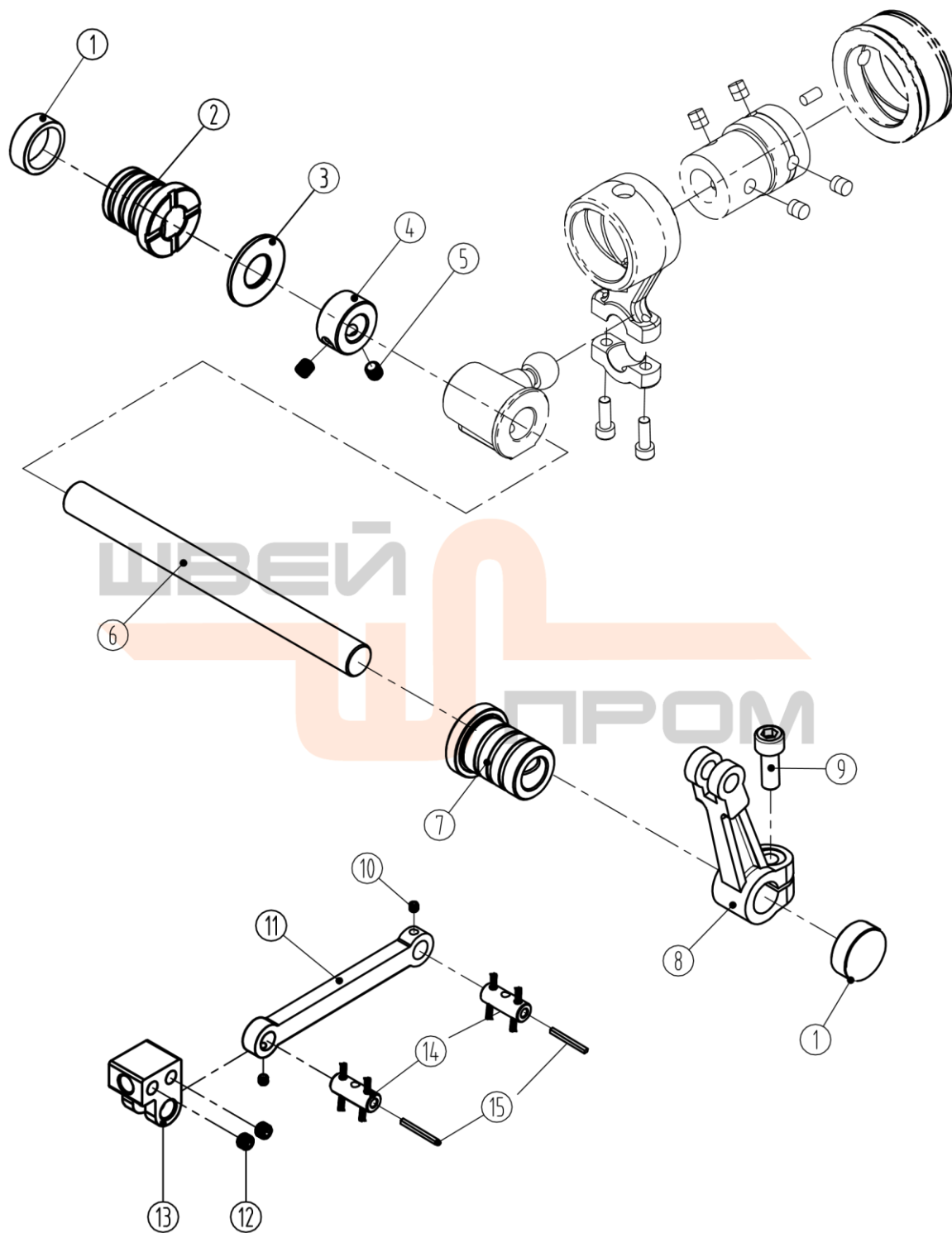


五、勾线部件/Thread Takeup assemblies

| 序号 No | 件号 Part No. | 参考件号 Ref.Part.No | 名称 | Description | 数量 Number | 备注 Remark |
|----------|----------------|---------------------|---------------|---------------|--------------|-----------|
| 48 | 30504028 | L9xxx | 弯针架(04064) | Looper Holder | 1 | |
| 48 | 30504040 | L9xxx | 弯针架(04080) | Looper Holder | 1 | |
| 48 | 30504008 | L9xxx | 弯针架(04085) | Looper Holder | 1 | |
| 48 | 30504024 | L9xxx | 弯针架(04095) | Looper Holder | 1 | |
| 48 | 30504023 | L9xxx | 弯针架(06048) | Looper Holder | 1 | |
| 48 | 30504016 | L9xxx | 弯针架(06064) | Looper Holder | 1 | |
| 48 | 30504022 | L9xxx | 弯针架(06080) | Looper Holder | 1 | |
| 48 | 30504044 | L9xxx | 弯针架(06095) | Looper Holder | 1 | |
| 48 | 30504031 | L9xxx | 弯针架(08032) | Looper Holder | 1 | |
| 48 | 30504042 | L9xxx | 弯针架(08048) | Looper Holder | 1 | |
| 48 | 30504017 | L9xxx | 弯针架(08064) | Looper Holder | 1 | |
| 48 | 30504038 | L9xxx | 弯针架(08085) | Looper Holder | 1 | |
| 48 | 30504039 | L9xxx | 弯针架(12032) | Looper Holder | 1 | |
| 48 | 30504029 | L9xxx | 弯针架(12048) | Looper Holder | 1 | |
| 48 | 30504009 | L9xxx | 弯针架(12064) | Looper Holder | 1 | |
| 48 | 30504018 | L9xxx | 弯针架(13064-32) | Looper Holder | 1 | |
| 48 | 30504019 | L9xxx | 弯针架(17032) | Looper Holder | 1 | |
| 48 | 30504037 | L9xxx | 弯针架(23032) | Looper Holder | 1 | |
| 48 | 30504021 | L9xxx | 弯针架(25032) | Looper Holder | 1 | |
| 49 | 30502034 | R9xx4 | 喂针轴(04064) | Shaft | 1 | |
| 49 | 30502050 | R9xx4 | 喂针轴(04080) | Shaft | 1 | |
| 49 | 30502008 | R9xx4 | 喂针轴(04085) | Shaft | 1 | |
| 49 | 30502032 | R9xx4 | 喂针轴(04095) | Shaft | 1 | |
| 49 | 30502031 | R9xx4 | 喂针轴(06048) | Shaft | 1 | |
| 49 | 30502024 | R9xx4 | 喂针轴(06064) | Shaft | 1 | |
| 49 | 30502030 | R9xx4 | 喂针轴(06080) | Shaft | 1 | |
| 49 | 30502054 | R9xx4 | 喂针轴(06095) | Shaft | 1 | |
| 49 | 30502036 | R9xx4 | 喂针轴(08032) | Shaft | 1 | |
| 49 | 30502052 | R9xx4 | 喂针轴(08048) | Shaft | 1 | |
| 49 | 30502025 | R9xx4 | 喂针轴(08064) | Shaft | 1 | |
| 49 | 30502037 | R9xx4 | 喂针轴(08085) | Shaft | 1 | |

| | | | | | | |
|----|----------|-------|---------------|-------|---|--|
| 49 | 30502049 | R9xx4 | 喂针轴(12032) | Shaft | 1 | |
| 49 | 30502035 | R9xx4 | 喂针轴(12048) | Shaft | 1 | |
| 49 | 30502009 | R9xx4 | 喂针轴(12064) | Shaft | 1 | |
| 49 | 30502026 | R9xx4 | 喂针轴(13064-32) | Shaft | 1 | |
| 49 | 30502027 | R9xx4 | 喂针轴(17032) | Shaft | 1 | |
| 49 | 30502038 | R9xx4 | 喂针轴(23032) | Shaft | 1 | |
| 49 | 30502029 | R9xx4 | 喂针轴(25032) | Shaft | 1 | |

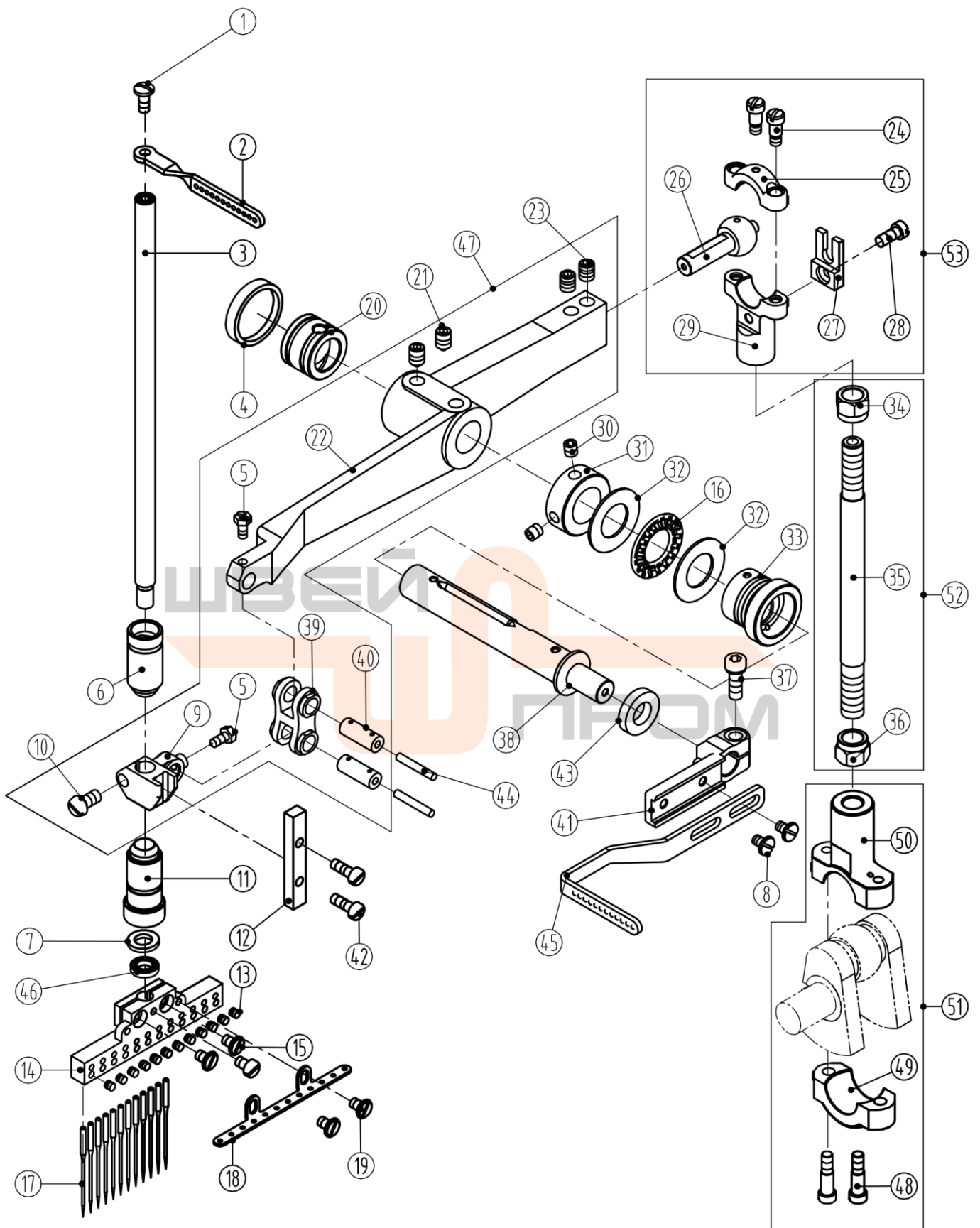




六、喂针部件/Needle Feeding assemblies

| 序号 No | 件号 Part No. | 参考件号 Ref.Part.No | 名称 | Description | 数量 Number | 备注 Remark |
|----------|----------------|---------------------|---|-------------|--------------|--------------|
| 1 | 30522011 | MQ21 | 喂针摆动横轴橡皮塞 $\phi 20$ | Oil Seal | 2 | |
| 2 | 30503019 | VE44 | 喂针摆动横轴后轴套 | Bushing | 1 | |
| 3 | 20128009 | MT29D | 垫圈 $\phi 12 \times \phi 26 \times 1.5$ | Washing | 1 | |
| 4 | 30508001 | MH73 | 挡圈 $\phi 12 \times \phi 20 \times 10$ | Ring | 1 | |
| 5 | S10014 | SM502 | 内六角凹端紧定螺钉 M5 \times 4 | Screw | 2 | GB/T80 |
| 6 | 30502010 | VE41 | 喂针摆动横轴 | Shaft | 1 | |
| 7 | 30503020 | VE38 | 喂针摆动横轴前轴套 | Bushing | 1 | |
| 8 | 30505007 | VE36D | 喂针摆动横轴连杆 | Link | 1 | |
| 9 | S05002 | SM612 | 内六角圆柱头螺钉 M6 \times 0.75 \times 15.2 | Screw | 1 | GB/T70.1 |
| 10 | 305S14003 | SM103 | 内六角锥端紧定螺钉 M3.5 \times 5 | Screw | 2 | |
| 11 | 30505008 | VE34D | 前拔线喂针轴固定座连杆 | Link | 1 | |
| 12 | 201S14002 | SK270 | 内六角凹端紧定螺钉 SM11/64" \times 40 \times 5 | Screw | 2 | |
| 13 | 30509005 | VE33D | 前拔线喂针轴固定座 | Slider | 1 | |
| 14 | 30526008 | VF10 | 销子 | Pin | 2 | 通 5-3 |
| 15 | 20123021 | VC11 | 油线 | Oil Wick | 1 | |

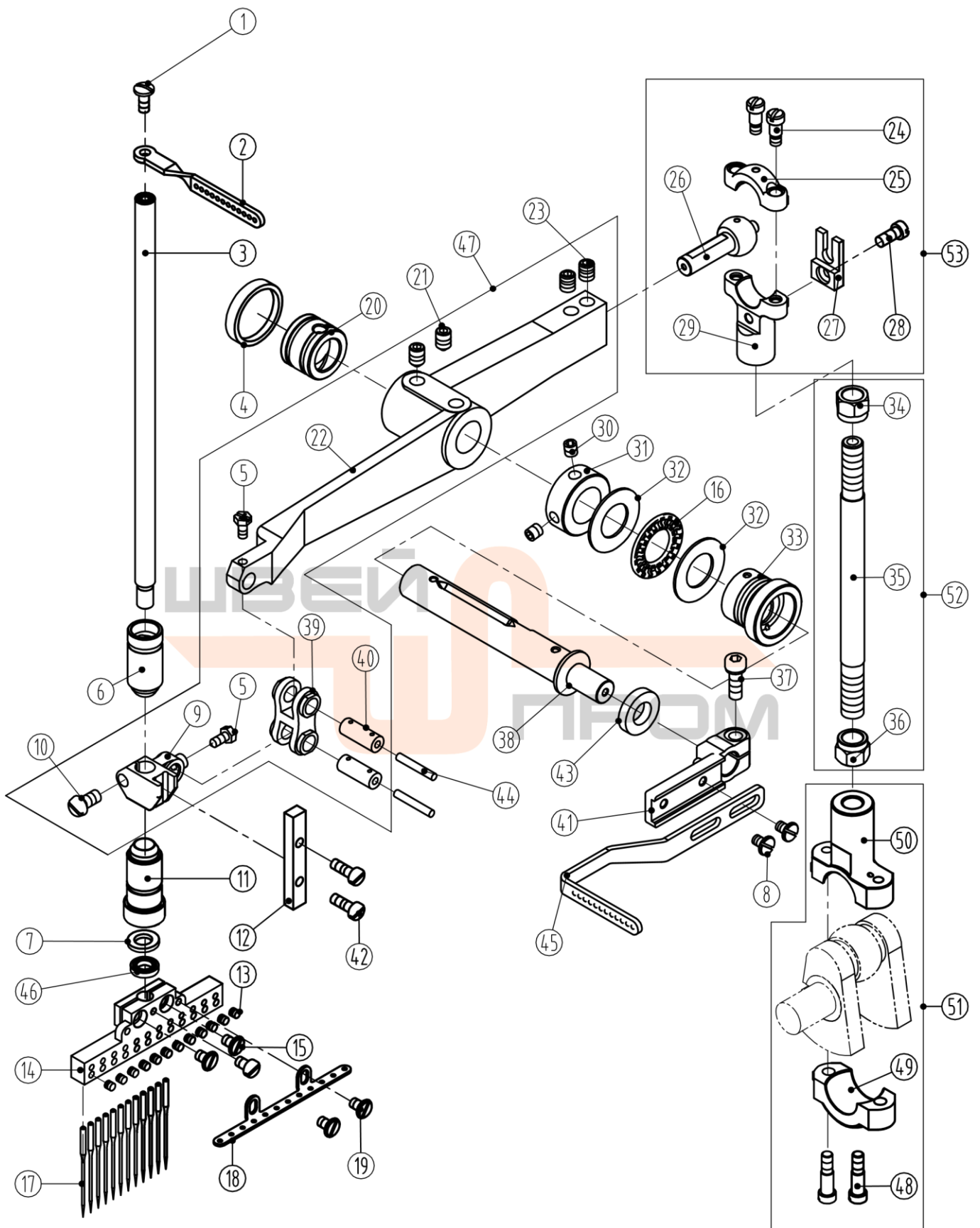




七、针杆部件/Needle Bar assemblies

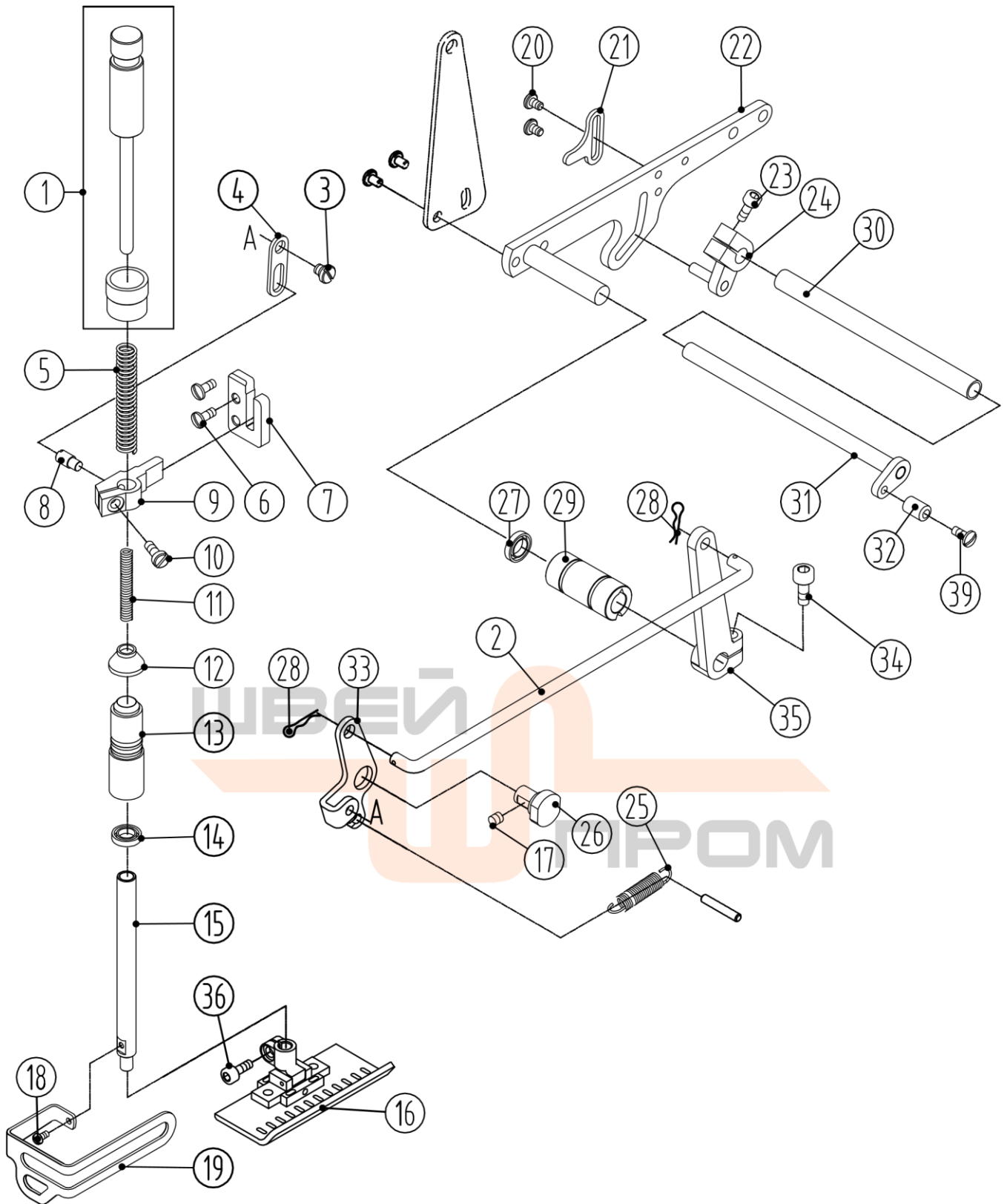
| 序号 No | 件号 Part No. | 参考件号 Ref.Part.No | 名称 | Description | 数量 Number |
|----------|----------------|---------------------|-----------------|-------------|--------------|
| 1 | S01038 | SM132 | 开槽球面圆柱头螺钉 M4×10 | Screw | 1 |
| 2 | 30513003 | | (4 | | 1 |
| 2 | 30513006 | | 6-13 | | 1 |
| 2 | 30513026 | | 17-25 | | 1 |
| 3 | 30502011 | | | | |
| 4 | 3052201200 | | 杠杆轴后轴套橡皮塞φ27 | | 1 |
| 5 | 305S12004 | | 8.5 | | 2 |
| 6 | 30503021 | | | | |
| 7 | 30523013 | | | | |
| 8 | 113S11004 | | 8 | | 2 |
| 9 | 30509006 | VF09 | | | 1 |
| 10 | S01011 | | 10 | | 1 |
| 11 | 30503022 | | | | |
| 12 | 30509007 | VF11D | | | |
| 13 | 305S14002 | | | 44×3 | 4 |
| 14 | 30534009 | M9**4 | 04064 | | 1 |
| 14 | 30534018 | M9**4 | 04080 | | 1 |
| 14 | 30534001 | M9**4 | 04085 | | 1 |
| 14 | 30534013 | M9**4 | 04095 | | 1 |
| 14 | 30534012 | M9**4 | 06048 | | 1 |
| 14 | 30534003 | M9**4 | 06064 | | 1 |
| 14 | 30534011 | M9**4 | 06080 | | 1 |
| 14 | 30534022 | M9**4 | 06095 | | 1 |
| 14 | 30534014 | M9**4 | 08032 | | 1 |

| | | | | | | |
|----|-----------|---------|-------------------|------------|---|---|
| 14 | 30534005 | M9**4 | 13064-032 | | | 1 |
| 14 | 30534006 | M9**4 | 17032 | | | 1 |
| 14 | 30534015 | M9**4 | 23032 | | | 1 |
| 14 | 30534008 | M9**4 | 25032 | | | 1 |
| 15 | 305S11004 | | 40×8 | | | 2 |
| 16 | 30524002 | | 平面滚针轴承φ15×φ28×1.4 | | | |
| 17 | 30517004 | | (UO×113GS14/90) | | | 1 |
| 17 | 30517005 | | (UO×113GS16/100) | | | 1 |
| 18 | 30513004 | M9**4-1 | (4 针用) | | | 1 |
| 18 | 30513007 | M9**4-1 | | (6-12 针用) | | 1 |
| 18 | 30513021 | M9**4-1 | | (13-25 针用) | | 1 |
| 19 | 305S11005 | | 40×4 | | | 3 |
| 20 | 30503023 | | | | | |
| 21 | 305S14006 | | 0.75×9 | | | 2 |
| 22 | 30505009 | | | | | 1 |
| 23 | 305S14007 | | 0.75×8 | | | 2 |
| 24 | S05010 | | | | | |
| 25 | 30505010 | | | | | |
| 26 | 30526011 | VF16 | | | | |
| 27 | 30512028 | | 驱动杠杆球连杆球杆 | Crank | 1 | |
| | | | 驱动杠杆球曲柄止摆块 | Cover | 1 | |
| 28 | 305S13019 | SK277 | 驱动杠杆球曲柄止摆块螺钉 | Screw | 1 | |
| 29 | 30505011 | | 驱动杠杆下球连杆 | Crank | 1 | |
| 30 | S09008 | SM502 | 内六角平端紧定螺钉 M5×5 | Screw | 2 | |



七、针杆部件/Needle Bar assemblies

| 序号 No | 件号 Part No. | 参考件号 Ref.Part.No | 名称 | Description | 数量 Number | 备注 Remark |
|----------|----------------|---------------------|--|-------------------------|--------------|----------------|
| 31 | 30508006 | VF05 | 挡圈 $\phi 14 \times \phi 27 \times 10$ | Ring | 1 | |
| 32 | 30528003 | VF04 | 垫圈 $\phi 15 \times \phi 27.8 \times 1$ | Washer | 2 | |
| 33 | 30503024 | VF03 | 针杆驱动杠杆轴前轴套 | Bushing | 1 | |
| 34 | 305S16002 | NK54 | 螺母 SM3/8"×24×10 左旋 | Nut | 1 | 组件 3050203000 |
| 35 | 30502012 | | 主轴大连杆调节杆 | Crank | 1 | |
| 36 | 305S16003 | NK53 | 螺母 SM3/8"×24×10 | Nut | 1 | |
| 37 | S05004 | SM511 | 内六角圆柱头螺钉 M5×14 | Screw | 1 | GB/T70.1 |
| 38 | 30502013 | VF02 | 针杆驱动杠杆轴 | Shaft | 1 | |
| 39 | 30505012 | VF08 | 针杆链条节 | Crank | 1 | 组件 3050500900 |
| 40 | 30526008 | VF10 | 针杆链条节销 | Pin | 2 | |
| 41 | 30509010 | VF17 | 上挑线过线板座 | Thread Guide Rivet Seat | 1 | |
| 42 | S01003 | SM438 | 开槽圆柱头螺钉 M4×12 | Screw | 2 | GB/T65 |
| 43 | 20622019 | | FB 型骨架油封 $\phi 10 \times \phi 19 \times 4$ | Oil wick | 1 | |
| 44 | 20123021 | VC11 | 油线 | Oil Seal | 1 | |
| 45 | 30513005 | VF18 | 上挑线过线板(4 针) | Thread guide | 1 | 4 针机专用 |
| 45 | 30513008 | VF18P | 上挑线过线板 (6-13 针) | Thread guide | 1 | 6、8、12、13 针机专用 |
| 45 | 30513047 | VF18P | 上挑线过线板 (17-25 针) | Thread guide | 1 | 17、23、25 针机专用 |
| 46 | 3052201500 | | 骨架油封 $\phi 7.8 \times \phi 14 \times 3$ | Oil Seal | 1 | |
| 47 | 3050500900 | VF01 | 针杆驱动杠杆组件 | Lever | 1 | |
| 48 | S05068 | | 内六角圆柱头螺钉 M5×120 | Screw | 2 | 组件 30605004 |
| 49 | 30505014 | | 后主轴下球连杆 | Crank | 1 | |
| 50 | 30505013 | | 后主轴上球连杆 | Crank | 1 | |
| 51 | 30605004 | | 后主轴球连杆组件 | Crank Assembly | 1 | |
| 52 | 3050203000 | VF23D | 主轴大连杆调节杆组件 | Connection assy. | 1 | 组件 3050203000 |
| 53 | 3050402400 | | 驱动杠杆球连杆组件 | Crank Assembly | 1 | 组件 3050402400 |



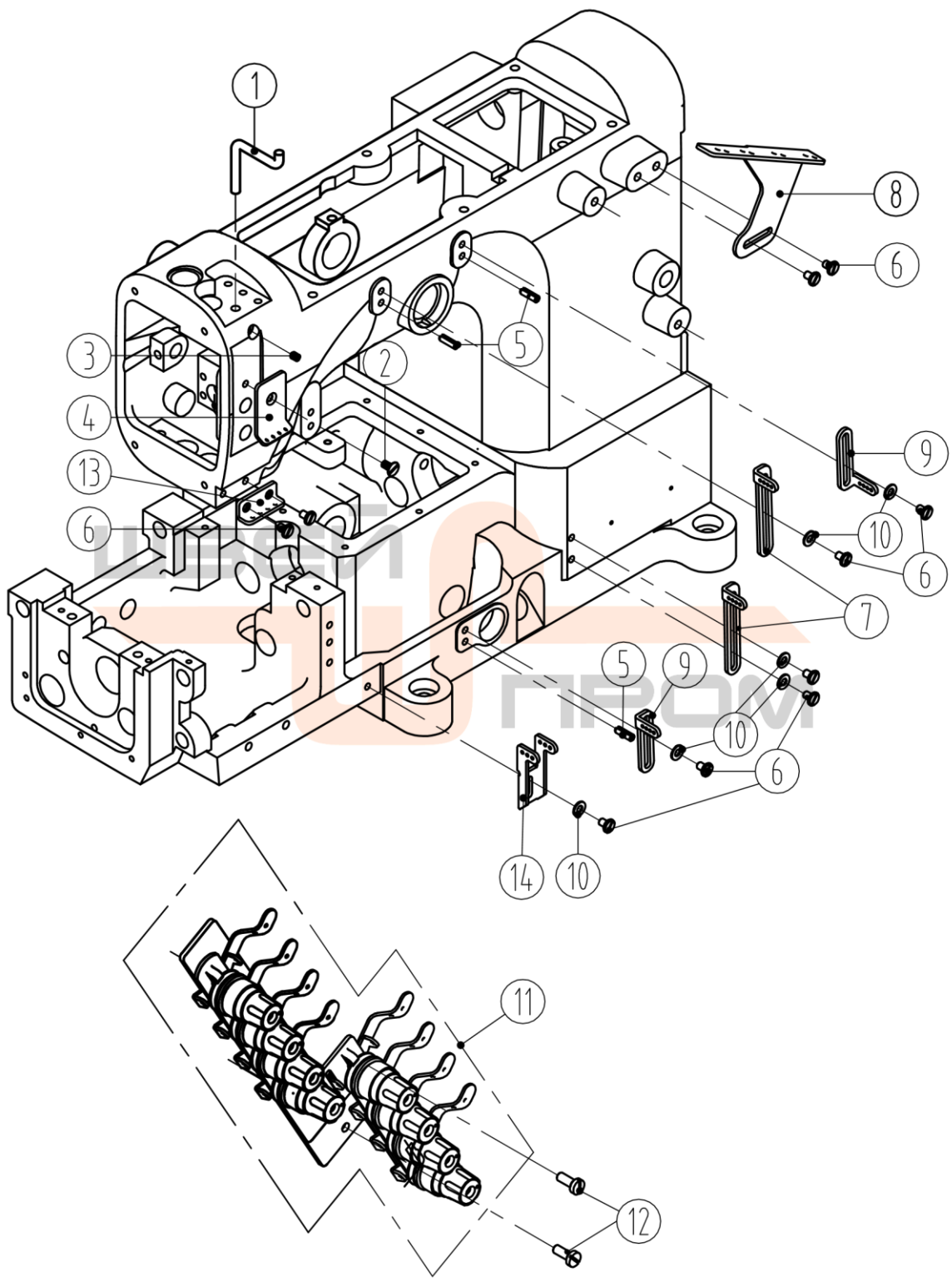
八、压脚部件/Presser Foot assemblies

| 序号 No | 件号 Part No. | 参考件号 Ref.Part.No | 名称 | Description | 数量 Number | 备注 Remark |
|----------|----------------|---------------------|--------------|--------------------|--------------|--------------|
| 1 | 3013002500 | VJ16 | 调压螺杆组件 | Adjusting Bar Assy | 1 | |
| 2 | 30512035 | VJ09 | 抬压脚拉杆 | Link | 1 | |
| 3 | 305S20009 | SK518 | 抬压脚吊板轴位螺钉 M5 | Screw | 1 | |
| 4 | 30512029 | VJ13 | 抬压脚吊板 | Bracket | 1 | |
| 5 | 30527007 | MJ03 | 调压弹簧 | Spring | 1 | |

| | | | | | | |
|----|------------|--------|--|-------------------|---|---------------|
| 6 | S01038 | SM438 | 开槽球面圆柱头螺钉 M4×10 | Screw | 2 | |
| 7 | 30509011 | VJ20 | 压脚轴导架导轨 | Slider | 1 | |
| 8 | 305S11007 | SK502 | 抬压脚吊板销钉 M5 | Screw | 1 | |
| 9 | 30509012 | VJ07 | 压脚轴导架 | Slider | 1 | |
| 10 | 305S11001 | SK265 | 开槽圆柱头螺钉 SM11/64"×40×12 | Screw | 1 | |
| 11 | 30527008 | MJ12 | 压脚轴轴内弹簧 | Spring | 1 | |
| 12 | 30522014 | MJ13 | 压脚轴轴套上防油套 | Oil Seal | 1 | |
| 13 | 30503025 | VJ21 | 压脚轴轴套 | Bushing | 1 | |
| 14 | 3052201500 | MJ17 | 骨架油封 $\phi 19 \times \phi 14 \times 3$ | Oil Seal | 1 | |
| 15 | 30502015 | VJ18 | 压脚轴 | Shaft | 1 | |
| 16 | 30516009 | P9**** | 压脚组件(04064) | presser foot assy | 1 | |
| 16 | 30516021 | P9**** | 压脚组件(04080) | presser foot assy | 1 | |
| 16 | 30516001 | P9**** | 压脚组件(04085) | presser foot assy | 1 | |
| 16 | 30516013 | P9**** | 压脚组件(04095) | presser foot assy | 1 | |
| 16 | 30516012 | P9**** | 压脚组件(06048) | presser foot assy | 1 | |
| 16 | 30516003 | P9**** | 压脚组件(06064) | presser foot assy | 1 | |
| 16 | 30516011 | P9**** | 压脚组件(06080) | presser foot assy | 1 | |
| 16 | 30516025 | P9**** | 压脚组件(06095) | presser foot assy | 1 | |
| 16 | 30516016 | P9**** | 压脚组件(08032) | presser foot assy | 1 | |
| 16 | 30516023 | P9**** | 压脚组件(08048) | presser foot assy | 1 | |
| 16 | 30516004 | P9**** | 压脚组件(08064) | presser foot assy | 1 | |
| 16 | 30516018 | P9**** | 压脚组件(08085) | presser foot assy | 1 | |
| 16 | 30516020 | P9**** | 压脚组件(12032) | presser foot assy | 1 | |
| 16 | 30516010 | P9**** | 压脚组件(12048) | presser foot assy | 1 | |
| 16 | 30516002 | P9**** | 压脚组件(12064) | presser foot assy | 1 | |
| 16 | 30516005 | P9**** | 压脚组件(13064-32) | presser foot assy | 1 | |
| 16 | 30516006 | P9**** | 压脚组件(17032) | presser foot assy | 1 | |
| 16 | 30516017 | P9**** | 压脚组件(23032) | presser foot assy | 1 | |
| 16 | 30516008 | P9**** | 压脚组件(25032) | presser foot assy | 1 | |
| 17 | S09008 | SM502 | 内六角平端紧定螺钉 M5×5 | Screw | 1 | GB/T77 |
| 18 | S01027 | SM332 | 开槽圆柱头螺钉 M3×6 | Screw | 1 | GB/T65 |
| 19 | 30512030 | VJ23 | 护指罩 (4 针) | Eye Guide | 1 | 4 针用 |
| 19 | 30512037 | VJ23 | 护指罩 (6-25 针) | Eye Guide | 1 | 6-25 针用 |
| 20 | 113S11004 | SM431 | 开槽圆柱头螺钉 M4×8 | Screw | 2 | GB/T65 |
| 21 | 30512031 | VJ03 | 抬压挺线限位块 | Bracket | 1 | |
| 22 | 3051203200 | VJ05-2 | 抬压挺线杠杆组件 | Lever Assembly | 1 | 组件 3051203200 |
| 22 | 30512032 | | 杠杆 | Lever | 1 | |
| 22 | 30526013 | | 杠杆轴 | Shaft | 1 | |

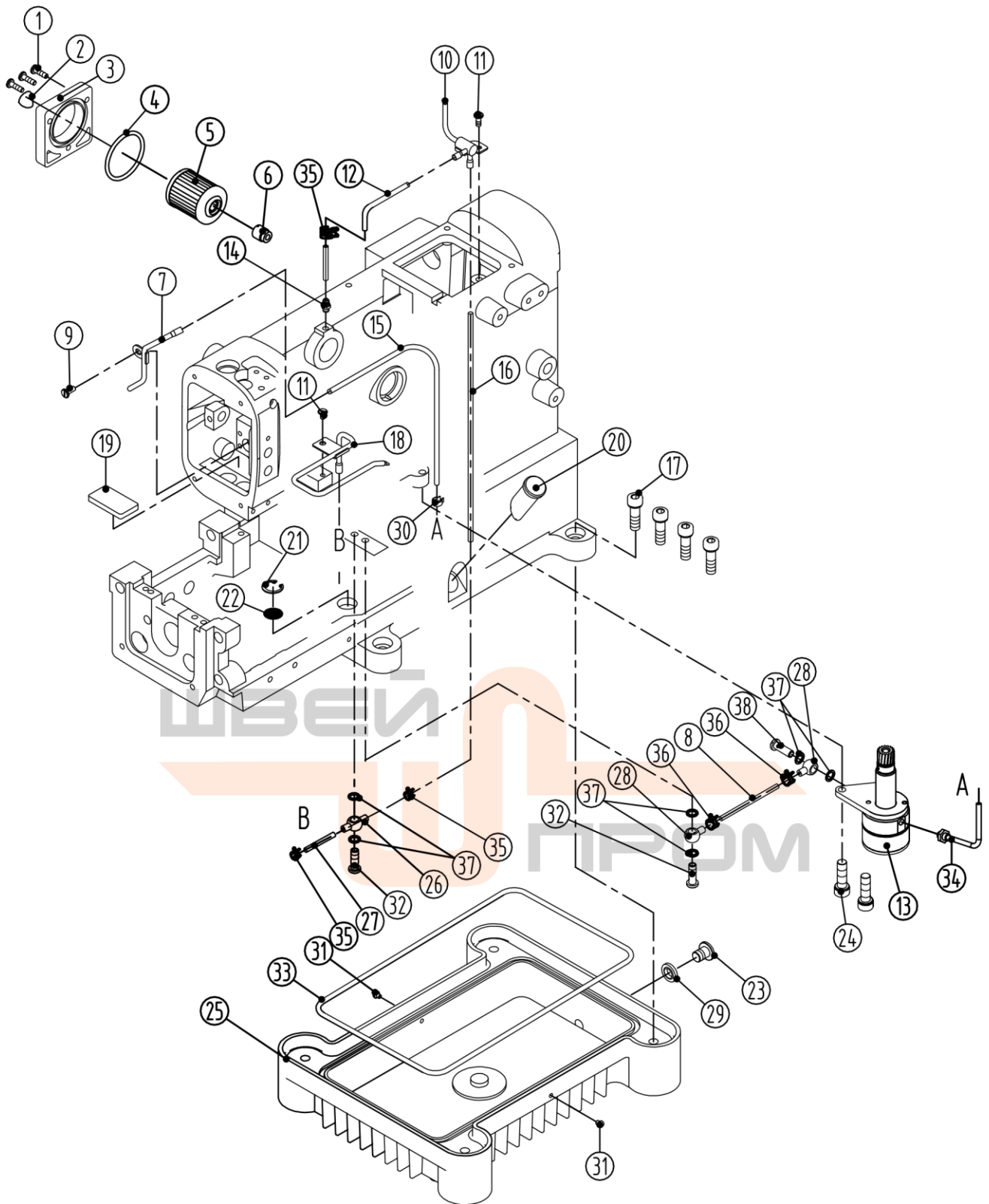
| | | | | | | |
|----|------------|--------|---|----------------|---|---------------|
| 23 | S05004 | SM534 | 内六角圆柱头螺钉 M5×14 | Screw | 1 | GB/T70.1 |
| 24 | 30504011 | VJ04 | 抬压挺线后曲柄组件 | Tighten | 1 | 组件 30504011 |
| 24 | 30504027 | | 紧固座 | | 1 | |
| 24 | 30526012 | | 销子 | Pin | 1 | |
| 25 | 30527010 | VJ14 | 抬压复位弹簧 | Spring | 1 | |
| 26 | 30526014 | VJ12D | 抬压脚前支点架销 | Pin | 1 | |
| 27 | 3052201700 | KL20 | 骨架油封 $\phi 9.1 \times \phi 15 \times 3$ | Oil Seal | 1 | |
| 28 | 30527009 | VJ10 | 抬压脚拉杆开口销 | Pin | 2 | |
| 29 | 30503026 | VJ06D | 抬压挺线杠杆轴轴套 | Bushing | 1 | |
| 30 | 30502016 | VJ02 | 抬压挺线曲柄轴套 | Thread Guide | 1 | |
| 31 | 3050201700 | VJ03 | 抬压挺线曲柄轴组件 | Shaft | 1 | 组件 3050201700 |
| 31 | 30502018 | | 松线轴 | Shaft | 1 | |
| 31 | 30512034 | | 连接板 | Carko | 1 | |
| 32 | 30510006 | VJ01-3 | 抬压挺线曲柄偏心调节套 | Eccent Bushing | 1 | |
| 33 | 30512036 | VJ11D | 抬压脚前支点架 | Crank | 1 | |
| 34 | S05002 | SM612 | 内六角圆柱头螺钉 M6×0.75×15.2 | Screw | 1 | GB/T70.1 |
| 35 | 30504012 | VJ08 | 抬压脚后曲柄 | Crank | 1 | |
| 36 | 305S13013 | ----- | 内六角圆柱头螺钉 M5×8 | Screw | 1 | |
| 37 | S01017 | | 开槽圆柱头螺钉 M4×14 | Screw | 1 | |





九、夹线器部件/Tension Spring assemblies

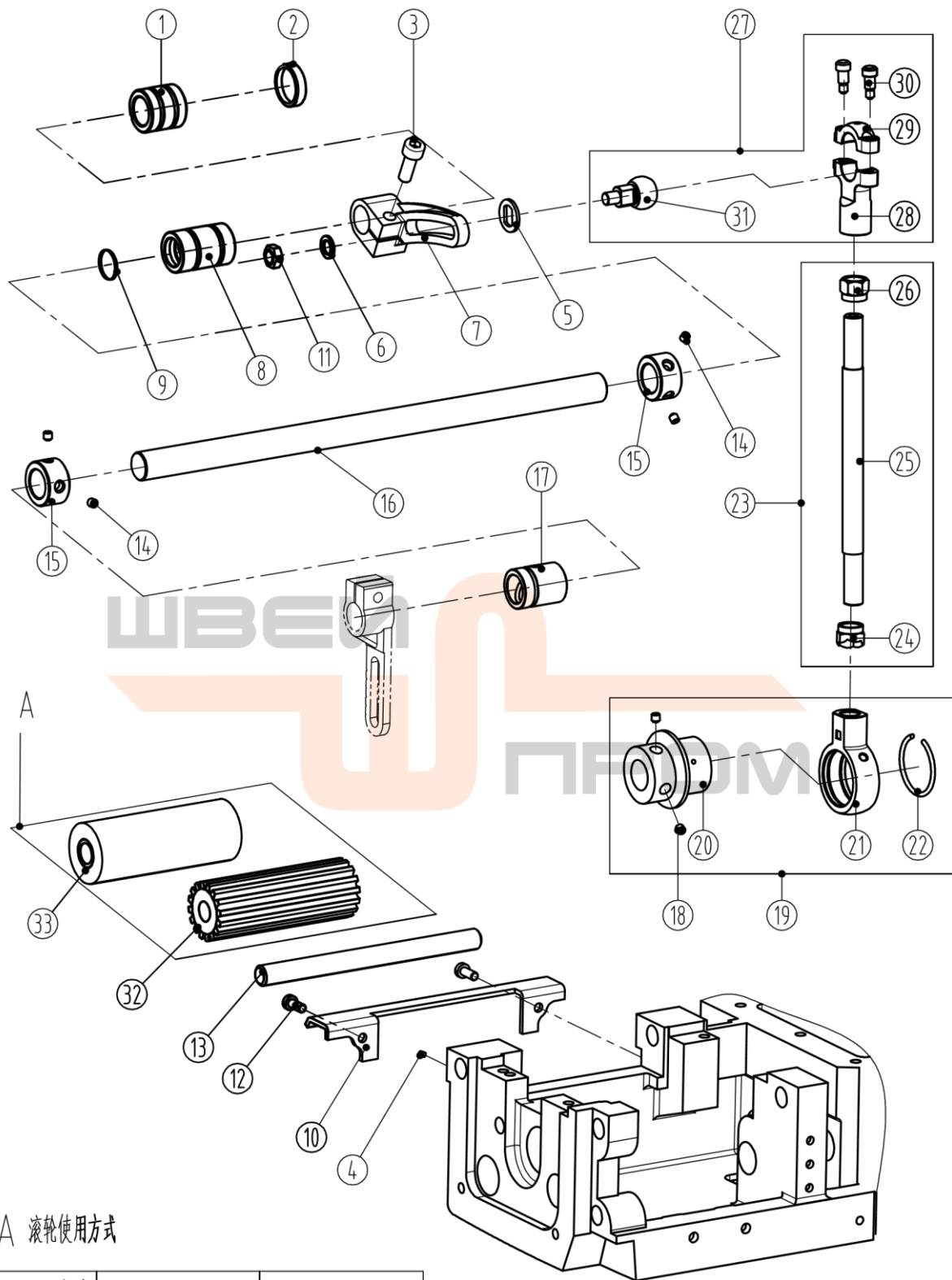
| 序号 No | 件号 Part No. | 参考件号 Ref.Part.No | 名称 | Description | 数量 Number | 备注 Remark |
|----------|----------------|---------------------|-----------------------------|---------------------|--------------|-----------|
| 1 | 30512038 | VK13 | 绷线紧勾 | Bracket | 1 | 4针机专用 |
| 1 | 30512039 | VK13 | 绷线紧勾 | Bracket | 1 | 6-25针机用 |
| 2 | S02003 | SM450 | 开槽沉头螺钉 M4×5 | Screw | 1 | GB/T68 |
| 3 | S09012 | SM404 | 内六角平端紧定螺钉 M4×5 | Screw | 1 | GB/T77 |
| 4 | 30513009 | VK15 | 针杆上过线板 (4针) | Thread Guide | 1 | |
| 4 | 30513015 | VK15 | 针杆上过线板 (6-13针) | Thread Guide | 1 | |
| 4 | 30513025 | VK15 | 针杆上过线板 (17-25针) | Thread Guide | 1 | |
| 5 | P03025 | PM413 | 弹性圆柱销 ϕ 4×12 | Pin | 3 | GB/T879.1 |
| 6 | 113S11004 | SM450 | 开槽圆柱头螺钉 M4×8 | Screw | 6 | GB/T65 |
| 7 | 30513010 | VK18 | 长过线板 (4针) | Thread Guide | 2 | |
| 7 | 30513016 | VK18 | 长过线板 (6-13针) | Thread Guide | 2 | |
| 7 | 30513022 | VK18 | 长过线板 (17-25针) | Thread Guide | 2 | |
| 8 | 30513011 | SM431 | 夹线器过线(4针) | Thread Guide | 1 | |
| 9 | 30513012 | VK11 | 短过线板 (4针) | Thread Guide | 2 | |
| 9 | 30513017 | VK11 | 短过线板 (6-13针) | Thread Guide | 2 | |
| 9 | 30513023 | VK11 | 短过线板 (17-25针) | Thread Guide | 2 | |
| 10 | 20612062 | MW400 | 垫圈 ϕ 4.3× ϕ 9×0.8 | Washer | 6 | |
| 11 | 30531047 | VK06 | 夹线器组件(4针) | Tension Spring Assy | 1 | |
| 11 | 3053104900 | VK07 | 夹线器组件 (6针、8针) | Tension Spring Assy | 1 | |
| 11 | 30531048 | VK06 | 夹线器组件(12针) | Tension Spring Assy | 1 | |
| 12 | S01059 | | 开槽球面圆柱头螺钉 M5×13 | Screw | 2 | |
| 13 | 30513013 | VK17 | 针杆下过线板 (4针) | Thread Guide | 1 | |
| 13 | 30513018 | VK17 | 针杆下过线板 (6-13针) | Thread Guide | 1 | |
| 13 | 30513027 | VK17 | 针杆下过线板 (17-25针) | Thread Guide | 1 | |
| 14 | 30513014 | VK07 | 弯针打线过线板 (4针) | Thread Guide | 1 | |
| 14 | 30513019 | VK07 | 弯针打线过线板 (6-13针) | Thread Guide | 1 | |
| 14 | 30513024 | VK07 | 弯针打线过线板 (7-25针) | Thread Guide | 1 | |



十、油泵部件/Lubrication assemblies

| 序号 No | 件号 Part No. | 参考件号 Ref.Part.No | 名称 | Description | 数量 Number | 备注 Remark |
|----------|----------------|---------------------|--|----------------|--------------|--------------|
| 1 | S01057 | SM447 | 开槽球面圆柱头螺钉 M4×15 | Screw | 3 | |
| 2 | 20337005 | KT18 | 商标 | Brand | 1 | |
| 3 | 20301005 | KT16 | 滤油器盖(喷漆) | Cover | 1 | 300077 |
| 4 | 20322004 | KT17 | O型圈 $\phi 39.5 \times \phi 45.7 \times \phi 3.1$ | Sticker | 1 | GB/T1235 |
| 5 | 20736004 | KT14 | 滤油器组件 | Filter Element | 1 | |

| | | | | | | |
|----|------------|---------|---------------------------------|--------------------|---|-----------|
| 6 | 30503027 | ML50 | 滤油器进油嘴 | pipe | 1 | |
| 7 | 30521012 | VL14 | 机头下巴吸油嘴组件 | Tube | 1 | |
| 8 | 30121021 | VL19 | 油管 $\phi 5 \times \phi 7$ L=100 | Tube | 1 | |
| 9 | 207S11011 | SM431 | 开槽圆柱头螺钉 M4×5 | Screw | 1 | GB/T65 |
| 10 | 30521013 | VL11 | 油窗喷油管组件 | Tube | 1 | |
| 11 | 113S11004 | SM435 | 开槽圆柱头螺钉 M4×8 | Screw | 2 | GB/T65 |
| 12 | 30121022 | VL16 | 油管 $\phi 4 \times \phi 6$ L=180 | Tube | 1 | |
| 13 | 3052000100 | ML01 | 油泵组件 | Pump | 1 | |
| 14 | 30536001 | VL12 | 杠杆轴后轴套供油嘴 | Joint | 1 | |
| 15 | 30121022 | VL15 | 油管 $\phi 4 \times \phi 6$ L=450 | Tube | 1 | |
| 16 | 30121022 | VL17 | 油管 $\phi 4 \times \phi 6$ L=450 | Tube | 1 | |
| 17 | 305S13003 | SM812 | 内六角圆柱头螺钉 M8×25 | Screw | 4 | GB/T70.1 |
| 18 | 3052101300 | VL07 | 机座供油管组件 | Tube Assembly | 1 | |
| 19 | 30523010 | VL13 | 机头下巴回油毡 | Felt | 1 | |
| 20 | 30511004 | VL06D | 油量指示窗 | Oil Window | 1 | |
| 21 | H01003 | EM164 | 孔用弹性挡圈 17 | Spring | 1 | GB/T893.1 |
| 22 | 30512040 | MB15 | 机座滤油网 | filter | 1 | |
| 23 | 305S11010 | SK310 | 放油螺钉 SM3/8"×28×12 | Screw | 1 | |
| 24 | 305S13004 | SM611 | 内六角圆柱头螺钉 M6×15 | Screw | 2 | GB/T70.1 |
| 25 | 30501006 | VL01 | 油盘 | Oil Reservoir Assy | 1 | |
| 26 | 30136005 | MW05 | 供油双通接头 | Joint | 1 | |
| 27 | 30121022 | VL20 | 油管 $\phi 4 \times \phi 6$ L=115 | Tube | 1 | |
| 28 | 20636001 | KT24 | 油管接头(铜) | Joint | 2 | |
| 29 | 20528014 | KT56 | 放油螺钉密封圈 | Sticker | 1 | |
| 30 | 20129002 | KT26*11 | 油管卡簧 | Ring | 1 | |
| 31 | 207S11011 | ----- | 开槽圆柱头螺钉 M4×5 | Screw | 2 | GB/T65 |
| 32 | 301S30013 | SK304 | 供油接头螺钉 SM1/4"×40 (长) | Screw | 3 | |
| 33 | 30522018 | VL02 | 油盘密封圈 | Oil Seal | 1 | |
| 34 | 30521014 | | 油泵回油管组件 | Tube | 1 | |
| 35 | 20429001 | | 油管夹 $\phi 6.5$ | | 4 | |
| 36 | 30129006 | | 油管夹 $\phi 7.5$ | | 2 | |
| 37 | 20122033 | | 油管接头垫圈 | | 6 | |
| 38 | 201S30004 | | 供油接头螺钉 SM1/4"×40 (短) | | 1 | |



A 滚轮使用方式

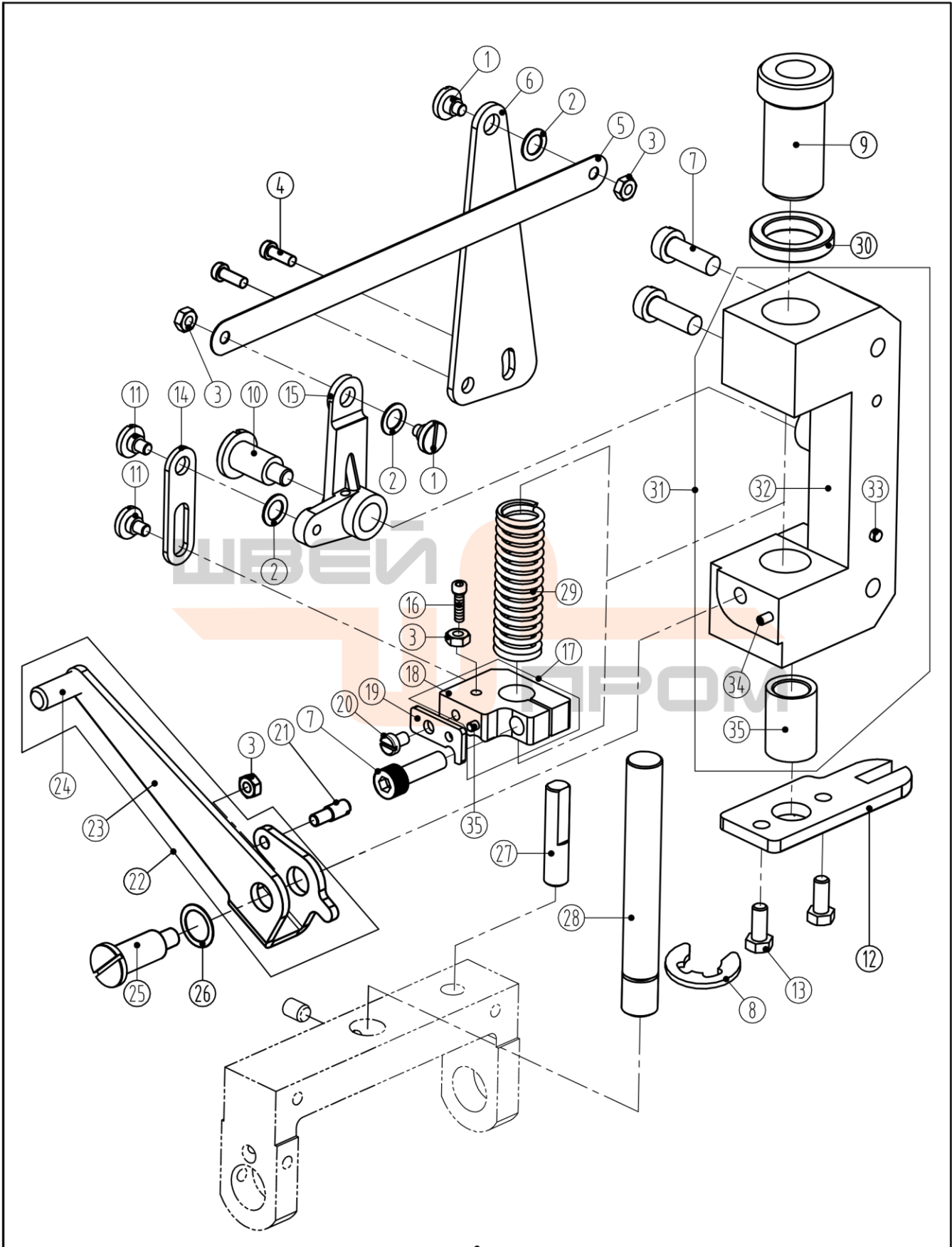
| 代码 | 齿形 | 平轮 | 齿轮 |
|-------|----|----------|----------|
| 上滚轮代码 | | 30525013 | 30525008 |
| 下滚轮代码 | | 30525014 | 30525006 |

十一、传送部件/Transmission assemblies

| 序号 No | 件号 Part No. | 参考件号 Ref.Part.No | 名称 | Description | 数量 Number | 备注 Remark |
|----------|----------------|---------------------|---|-------------|--------------|------------------|
| 1 | 30503028 | | | | | |
| 2 | 30522019 | | 传送轴后轴套橡皮塞 $\phi 21$ | | | |
| 3 | S05002 | | 0.75 \times 15.2 | | 1 | |
| 4 | S09012 | | 5 | | 1 | |
| 5 | 30512045 | | | | | |
| 6 | 30328007 | | 垫圈 $\phi 6.5 \times \phi 16 \times 1.5$ | | | |
| 7 | 30504013 | | | | | |
| 8 | 30503029 | | | | | |
| 9 | 30522020 | | 型圈 $\phi 13.6 \times \phi 18.4 \times \phi 2.4$ | | 1 | |
| 10 | 30512046 | | 后拖轮传送轴右轴套 | Bushing | 1 | |
| | | | | Oil Seal | 1 | |
| | | | 内六角圆柱头螺钉M6 \times | Screw | | GB/T70.1 |
| | | | 内六角平端紧定螺钉M4 \times | Screw | | GB/T77 |
| | | | 传送轴右曲柄调节垫圈 | Washer | 1 | |
| | | | | Washer | 1 | |
| | | | 后拖轮传动轴右曲柄 | Crank | 1 | |
| | | | 后拖轮传送轴中轴套 | Bushing | 1 | |
| | | | O | Oil Seal | | GB/T 1235 |
| | | | 下拖轮护料板 | Eye Guide | 1 | |
| | | | 螺母M6 \times | Nut | | |
| | | | 开槽圆柱头螺钉M4 \times | Screw | | GB/T65 |
| | | | 下拖轮轴 | Shaft | 1 | |
| | | | 内六角凹端紧定螺钉M5 \times | Screw | | 通用 |
| | | | | Ring | 2 | |
| | | | 后拖轮传送轴 | Crank | 1 | |
| | | | 后拖轮传送轴左轴套 | Bushing | 1 | |
| | | | 内六角平端紧定螺钉M6 \times | Screw | | 通用 |
| 11 | 305S16007 | | 后拖轮传送偏心轮连杆组件 0.75 | Eccent Assy | 1 | |
| 12 | 113S11004 | | 8 | | 2 | |
| 13 | 30502019 | | | | | |
| 14 | S10014 | | 4 | | 4 | 3-6 |
| 15 | 30508007 | VCL11 | 挡圈 $\phi 14 \times \phi 22 \times 12$ | | | |
| 16 | 30502020 | | | | | |
| 17 | 30503030 | | | | | |
| 18 | S09002 | | 6 | | 2 | 3-10 |
| 19 | 3051001100 | | | | | |
| 20 | 30510010 | | | | | |
| 21 | 30505016 | | 后拖轮传送偏心凸轮 | Eccent | 1 | 组件 3051001100 |
| | | | 后拖轮传送连杆 | Eccent Assy | 1 | |
| 22 | 30508009 | VCL03 | 卡簧 | Spring | 1 | |

| | | | | | | |
|------|------------|-------|--------------------|-------------------|---|------------------|
| 23 | 3050203100 | | 后拖轮调节杆组件 | connection Assy | 1 | |
| 24 | 305S16003 | NK53 | 螺母 SM3/8"×24×10 | Screw | 1 | 组件 3050203100 |
| 25 | 30502021 | VF23D | 后拖轮调节杆 | Connection | 1 | |
| 26 | 305S16002 | NK54 | 螺母 SM3/8"×24×10 左旋 | Nut | 1 | 组件 3050402600 |
| 27 | 3050402600 | VCL05 | 传送轴球连杆组件 | Crank Assembly | 1 | |
| 28 | 30505015 | | 传送轴连杆底部 | Crank Assembly | 1 | |
| 29 | 30505010 | | 驱动杠杆上球连杆 | Crank Assembly | 1 | |
| 24 | S05010 | SK491 | 驱动杠杆球连杆螺钉 | Screw | 2 | |
| 31 | 305S30005 | VCL05 | 传送轴球连杆球杆 | Crank | 1 | |
| 32 | 30525006 | | 下拖轮组件 (齿) | Press Wheel Assy. | 1 | 组件 3050901500 |
| 33 | 30525014 | VCL28 | 下拖轮组件 (平) | Press Wheel Assy. | 1 | 组件 3050901700 |
| 33-1 | 30525014-1 | | 橡胶轮内套 | Press Wheel Assy. | 1 | |
| 33-2 | 30525014-2 | | 橡胶轮 | Press Wheel Assy. | 1 | |



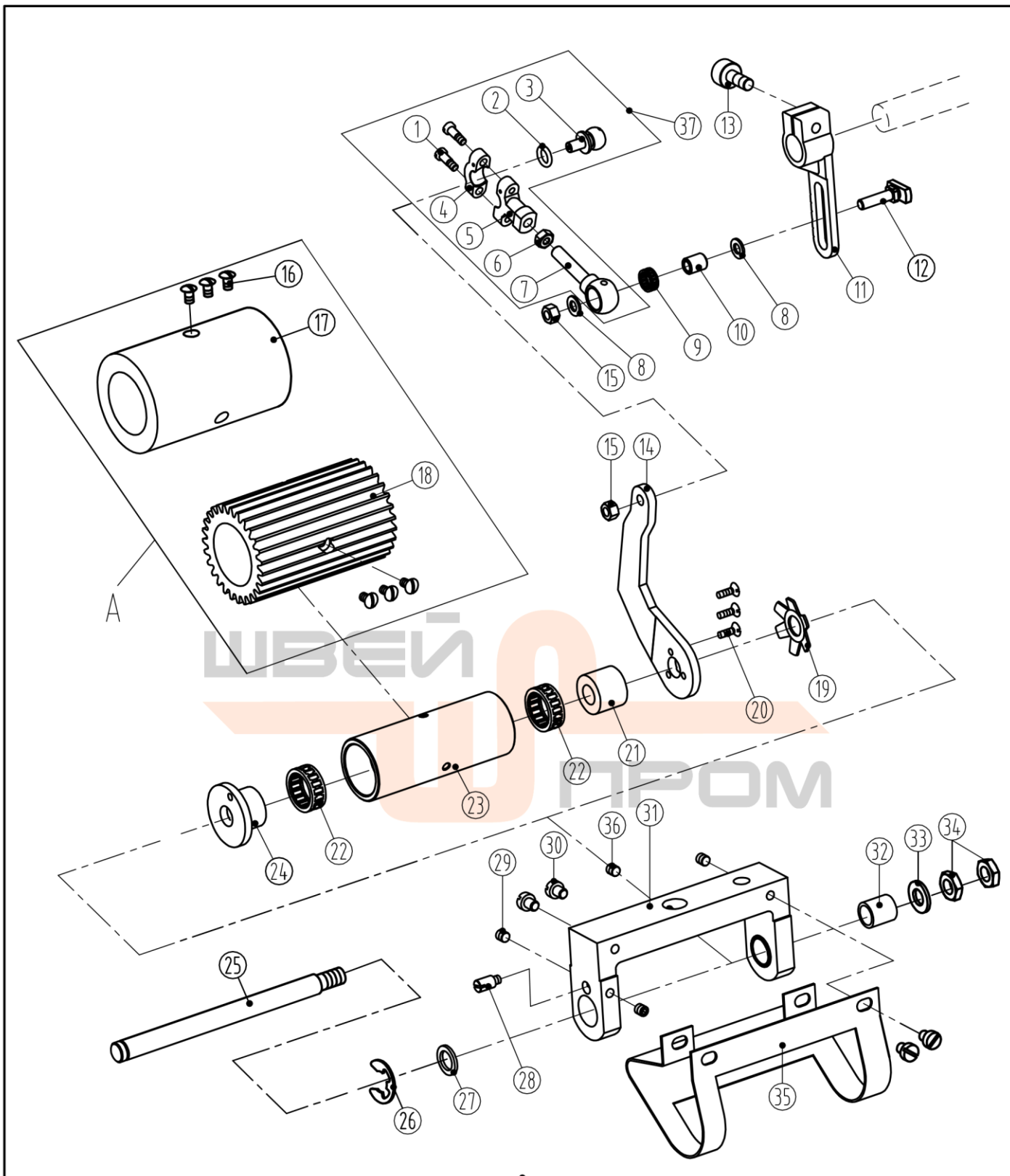


十二、后凸轮架部件/After Cam Fight assemblies

| 序号 No | 件号 Part No. | 参考 件号 Ref.Part.No | 名称 | Description | 数量 Number | 备注 Remark |
|----------|----------------|-------------------------|---|-----------------|--------------|------------------|
| 1 | 305S20010 | SM491 | | | | |
| 2 | 30528011 | | 橡胶垫圈 $\phi 7 \times \phi 11 \times 0.6$ | | | |
| 3 | N01001 | | | | | |
| 4 | S01065 | | 6 | | 2 | |
| 5 | 30512047 | | | | | |
| 6 | 30512048 | | | | | |
| 7 | S05240 | | 20 | | 2 | |
| 8 | H05011 | | 9 | | 1 | |
| 9 | 305S30006 | | 轴位螺钉M4 | Screw | 1 | |
| | | | | Washer | 4 | |
| | | | 六角螺母M4 | Nut | 4 | |
| | | | 开槽圆柱头螺钉M5× | Screw | | GB/ T65 |
| | | | 后拖轮提升长连杆 | Sheet Iron Link | 1 | |
| | | | 后拖轮提升长连杆连接板 | Bracket | 1 | |
| | | | 内六角圆柱头螺钉M6× | Screw | | GB/ T70.1 |
| | | | 开口挡圈 | Spring | | |
| | | | 后拖轮调压螺钉 | Adjusting Screw | 1 | |
| | | | 轴位螺钉M6 | Screw | 1 | |
| | | | 轴位螺钉M4 | Screw | 2 | |
| | | | 后拖轮上下导轨 | Regulator Plate | 1 | |
| | | | 开槽六角头螺栓M5× | Screw | | |
| | | | 后拖轮提升吊板 | Bracket | 1 | |
| | | | 后拖轮提升杆曲柄 | Crank | 1 | |
| | | | 内六角圆柱头螺钉M4× | Screw | | GB/ T70.1 |
| | | | 调压弹簧挡块组件 | Spring Plate | 1 | |
| 10 | 305S20011 | SM681 | | | | |
| 11 | 305S20012 | SM492 | | | | |
| 12 | 30512053 | | | | | |
| 13 | 207S1104 | | 9.5 | | 2 | |
| 14 | 30512049 | | | | | |
| 15 | 30504014 | | | | | |
| 16 | S05063 | | 25 | | 1 | |
| 17 | 30509013 | | | | | 组件 30509013 |
| 18 | 30509015 | VCL22 | 调压弹簧挡块 | Spring Plate | 1 | |
| 19 | 30512050 | VCL34 | 后拖轮上下扳手限位板 | Bracket | 1 | |
| 20 | S01055 | SM448 | 开槽圆柱头螺钉 M4×6 | Screw | 1 | |
| 21 | 305S11014 | SM472 | 轴肩螺钉 M4 | Screw | 1 | |
| 22 | 3051205100 | CL33 | 后拖轮调节上下扳手组件 | Regulator Plate | 1 | |
| 23 | 30512052 | | 调节扳手 | Regulator Plate | 1 | 组件 3051205100 |
| 24 | 30526016 | | 调节扳手柄 | Regulator Plate | 1 | |

| | | | | | | |
|----|------------|-------|--|-----------------------|---|----------------|
| 25 | 305S20013 | SM682 | 轴位螺钉 M6 | Screw | 1 | |
| 26 | 30528012 | CL34 | 波形弹性垫圈 $\phi 11 \times \phi 15 \times 0.3$ | Bracket | 1 | |
| 27 | 30526020 | VCL19 | 后拖轮架上下导杆 | Pin | 1 | |
| 28 | 30502022 | VCL30 | 后拖轮架座轴 | Shaft | 1 | |
| 29 | 30527017 | CL28 | 后拖轮调压弹簧 | Spring | 1 | |
| 30 | 305S16006 | | 后拖轮调节螺母 | Screw | 1 | |
| 31 | 30501042 | VCL21 | 后拖轮架座组件 | Finger Guide | 1 | 组件 30501042 |
| 32 | 30526018 | | 后拖轮架座 | Finger Guide | 1 | |
| 33 | 30526019 | | 后拖轮架座销 | Finger Guide | 1 | |
| 34 | 30526023 | PM302 | 销子 | Pin | 1 | |
| 35 | 30503031 | CL26 | 后拖轮架座下铜套 | Bushing | 1 | |
| 36 | 3050901500 | ----- | 后凸轮架座组件(齿轮式) | After Cam Assembly | 1 | |
| 36 | 3050901700 | ----- | 后凸轮架座组件(光滑式) | After Cam Assembly | 1 | |





A 滚轮使用方式

| 代码 \ 齿形 | 平轮 | 齿轮 |
|---------|----------|----------|
| 上滚轮代码 | 30525013 | 30525008 |
| 下滚轮代码 | 30525014 | 30525006 |

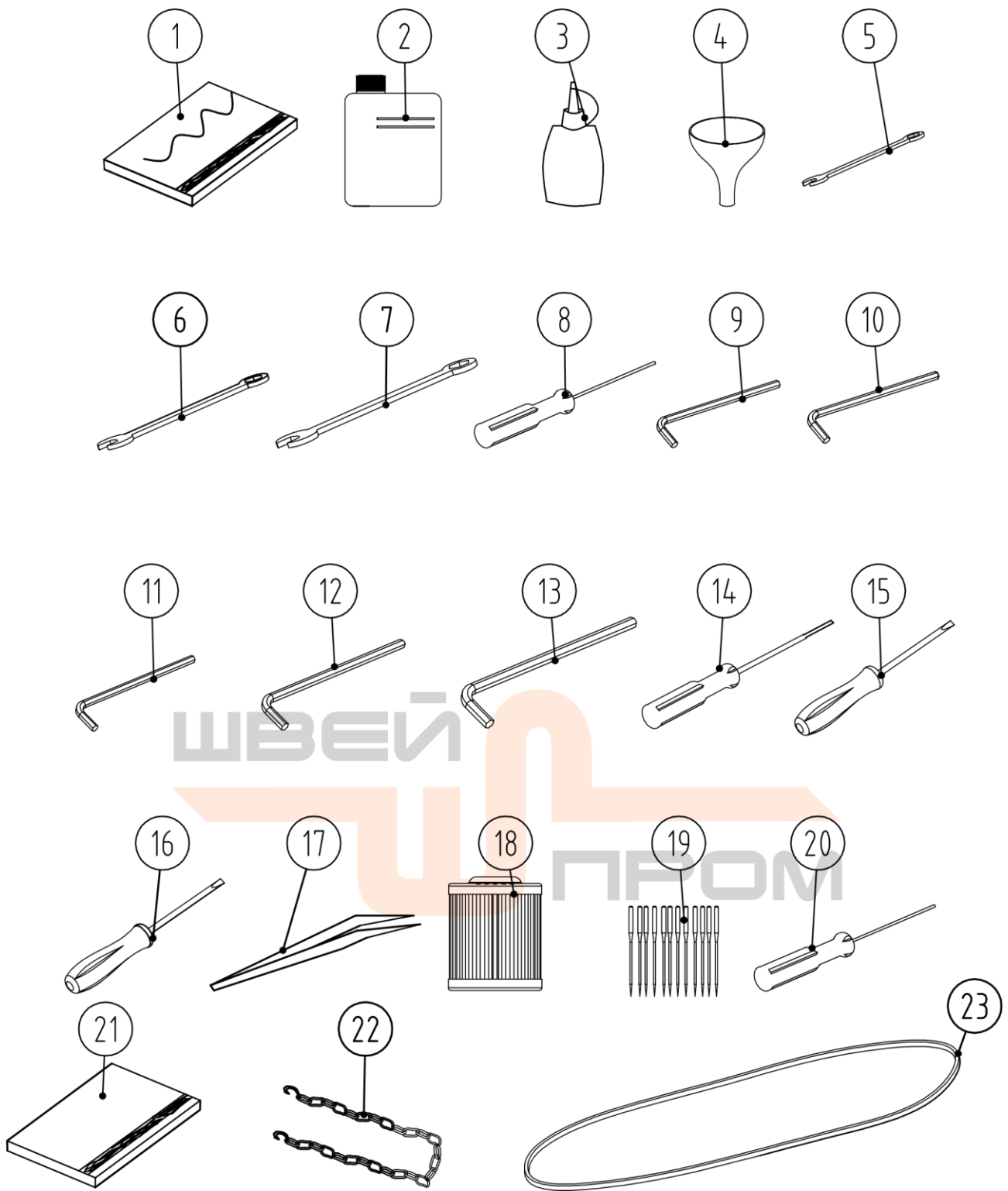
十三、后凸轮部件/After Cam assemblies

| 序号 No | 件号 Part No. | 参考 件号 Ref.Part.No | 名称 | Description | 数量 Number | 备注 Remark |
|----------|-------------------|-------------------------|--|-------------|--------------|--------------|
| 1 | 305S20014 | SM524 | 后拖轮球连杆螺钉 M5×8.5 | Screw | 2 | |
| 2 | 30522021 | | 型圈 $\phi 7 \times \phi 10 \times \phi 1.9$ | | 1 | |
| 3 | 305S30007 | | | | | |
| 4 | 30505018 | | | | | |
| 5 | 30505019 | | | | | |
| 6 | 305S16008 | | | | | |
| 7 | 30505020 | | | | | |
| 8 | W01090 | | 5 | | 2 | |
| 9 | B07011 | | 11×10 | | 1 | |
| 10 | 30503034 | | | | | |
| 11 | 30504015 | | | | | |
| 12 | 305S30009 | | | | | |
| 13 | S05037 | | | 15 | 1 | |
| 14 | 30512055 | | | | | |
| 15 | N01004 | | | | | |



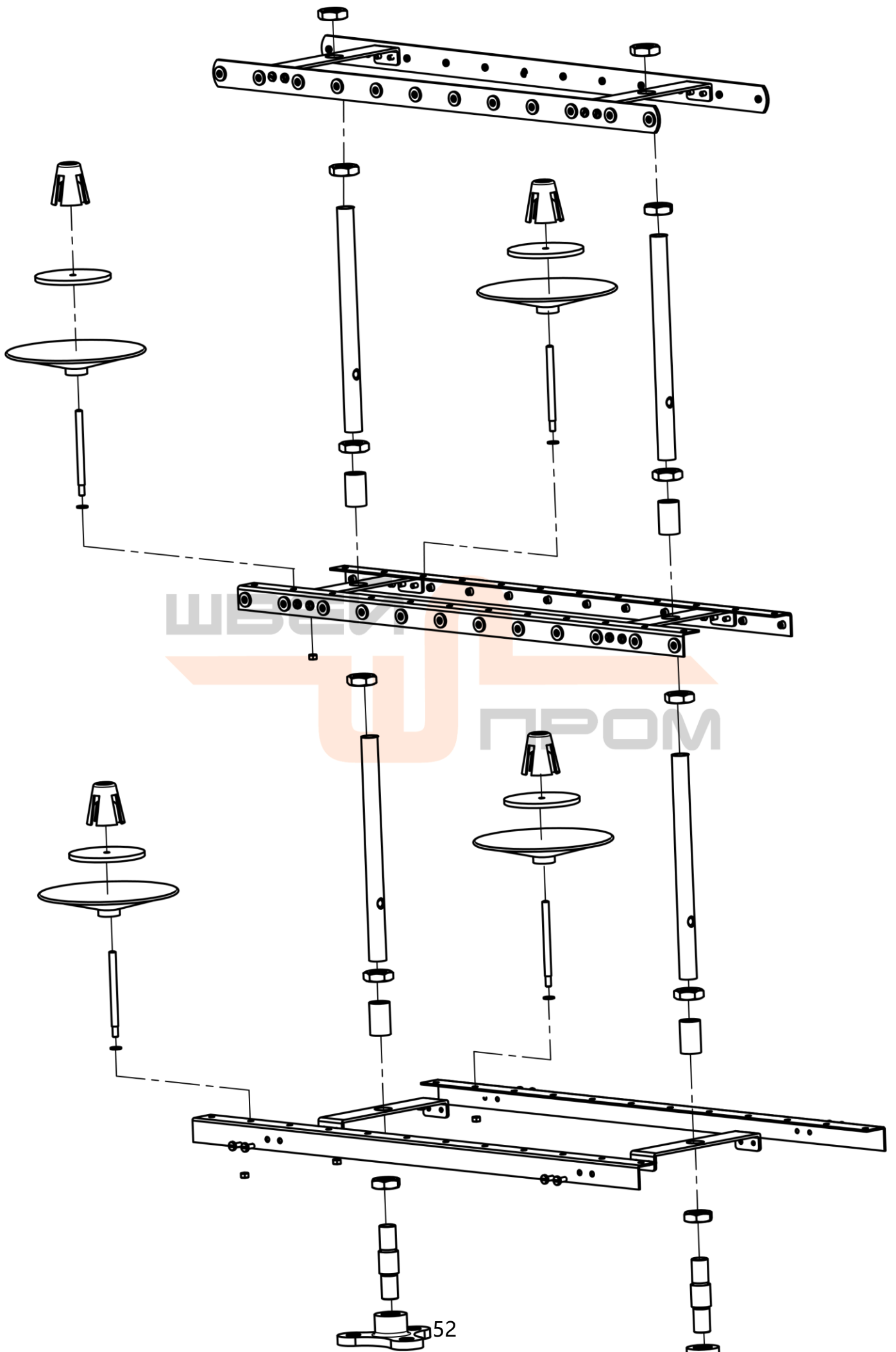
| | | | | | | | | |
|----|------------|-------|----------------|-------------------|---|--------------------|---|--------|
| 31 | 30503032 | | 后压轮架 | Press Wheel Fight | 1 | | | |
| | | | 后压轮架厚铜套 | Bushing | 1 | | | |
| | | | 后压轮架薄铜套 | Bushing | 1 | | | |
| 32 | 30503036 | VCL31 | 后轮挤压套 | | | Bushing | 1 | |
| 33 | W01010 | WM800 | 垫圈 8 | | | Washer | 1 | |
| 34 | N01008 | NM810 | 六角螺母 M8 | | | Nut | 2 | |
| 35 | 30512054 | | 后拖轮防护罩 | | | Plate | 1 | |
| 36 | S09002 | SM603 | 内六角平端紧定螺钉 M6×6 | | | Screw | 1 | GB/T77 |
| 37 | 3050501700 | CL51 | 后拖轮球连杆组件 | | | connection Assy | 1 | |
| 38 | 3050901500 | | 后凸轮组件(齿轮式) | | | After Cam Assembly | 1 | |
| 38 | 3050901700 | | 后凸轮组件(光滑式) | | | After Cam Assembly | 1 | |





十四、附件部件(1)/ (1)

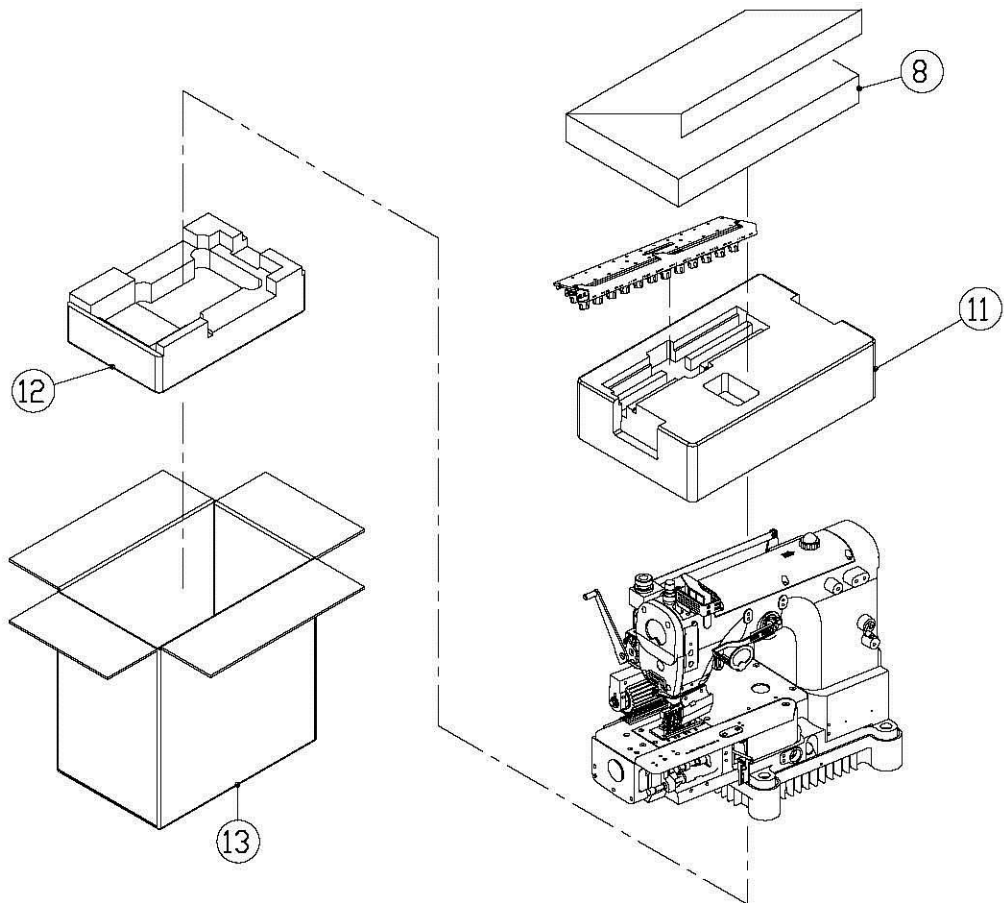
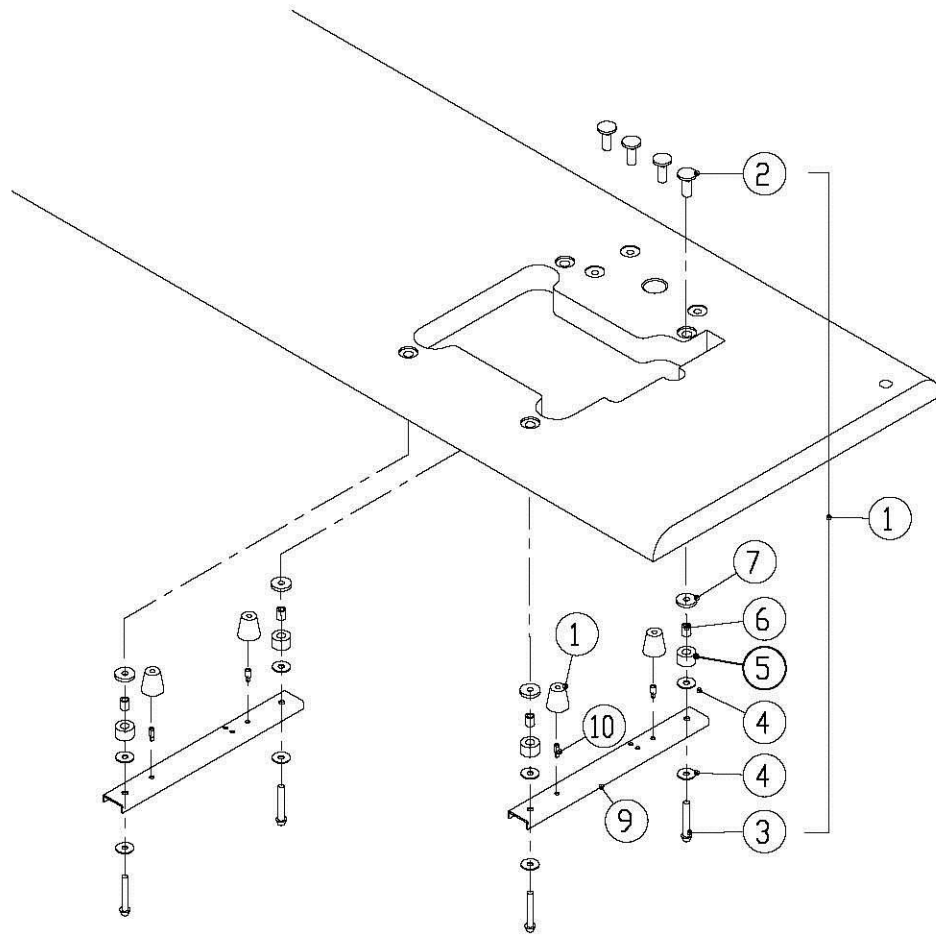
| 序号 No | 件号 Part No. | 参考件号 Ref.Part.No | 名称 | Description | 数量 Number | 备注 Remark |
|----------|----------------|---------------------|--------------|-----------------------------|--------------|--------------|
| 1 | 40131017 | ----- | 防尘罩 | dust guard | 1 | |
| 2 | 20131037 | MY02 | 油壶 | Oil Can | 1 | |
| 3 | 20131038 | MY03 | 小油壶 | Oil Can | 2 | |
| 4 | 20131039 | KY04 | 漏斗 | Oil Funnel | 1 | |
| 5 | 20131041 | KY07 | 6mm 六角扳手 | Spanner(6mm) | 1 | |
| 6 | 20131042 | KY08 | 7mm 六角扳手 | Spanner(7mm) | 1 | |
| 7 | 20131043 | KY09 | 8mm 六角扳手 | Spanner(8mm) | 1 | |
| 8 | 20131044 | MY09 | 内六角螺丝刀 1.5mm | Inner-hexagon Driver(1.5mm) | 1 | |
| 9 | 20131046 | MY08 | 2mm 内六角扳手 | Inner-hexagon Driver(2mm) | 1 | |
| 10 | 30131010 | MY10 | 3mm 内六角扳手 | Inner-hexagon Driver(3mm) | 1 | |
| 11 | 30131012 | MY11 | 4mm 内六角扳手 | Inner-hexagon Driver(4mm) | 1 | |
| 12 | 20131047 | MY12 | 5mm 内六角扳手 | Inner-hexagon Driver(5mm) | 1 | |
| 13 | 20131056 | KY11 | 6mm 内六角扳手 | Inner-hexagon Driver(6mm) | 1 | |
| 14 | 10131002 | KY14 | 大号一字螺钉刀 | Screw Driver | 1 | |
| 15 | 10131003 | KY17 | 中号一字螺钉刀 | Screw Driver | 1 | |
| 16 | 10131004 | KY16 | 小号一字螺钉刀 | Screw Driver | 1 | |
| 17 | 20131051 | KY18 | 镊子 | Tweezer | 1 | |
| 18 | 20136001 | KT14 | 滤油器 | Oil Filter | 1 | |
| 19 | 30517004 | Uo113 | 机针 | Needle | 10 | |
| 20 | 20131045 | MY09 | 内六角螺丝刀 1.6mm | Inner-hexagon Driver(1.6mm) | 1 | |
| 21 | 30531029 | ----- | 说明书零件样本 | Parts list Instruction book | 1 | |
| 22 | 30131018 | KY21 | 链条 | Chain | 1 | |
| 23 | 30135004 | ----- | 皮带 | Leather belt | 1 | 非直驱配备 |



十五、附件部件(2)/ (2)

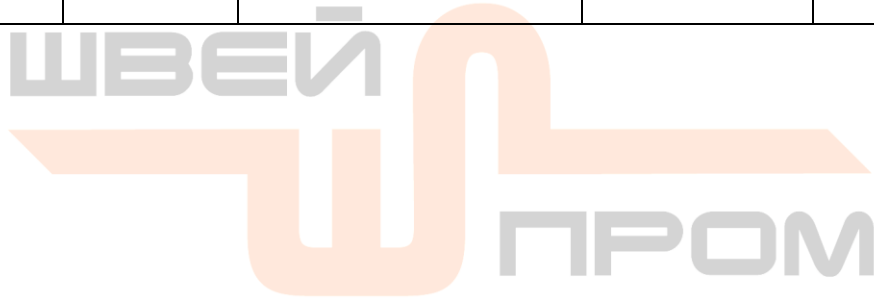
| 序号 No | 件号 Part No. | 参考件号 Ref.Part.No | 名称 | Description | 数量 Number | 备注 Remark |
|----------|----------------|---------------------|--------|-------------|--------------|--------------|
| 1 | 30532002 | ----- | 8 线线架 | Fight | 1 | 4 针用 |
| 2 | 30532003 | ----- | 12 线线架 | Fight | 1 | 6 针用 |
| 3 | 30532004 | ----- | 16 线线架 | Fight | 1 | 8 针用 |
| 4 | 30532005 | ----- | 24 线线架 | Fight | 1 | 12-25 针用 |

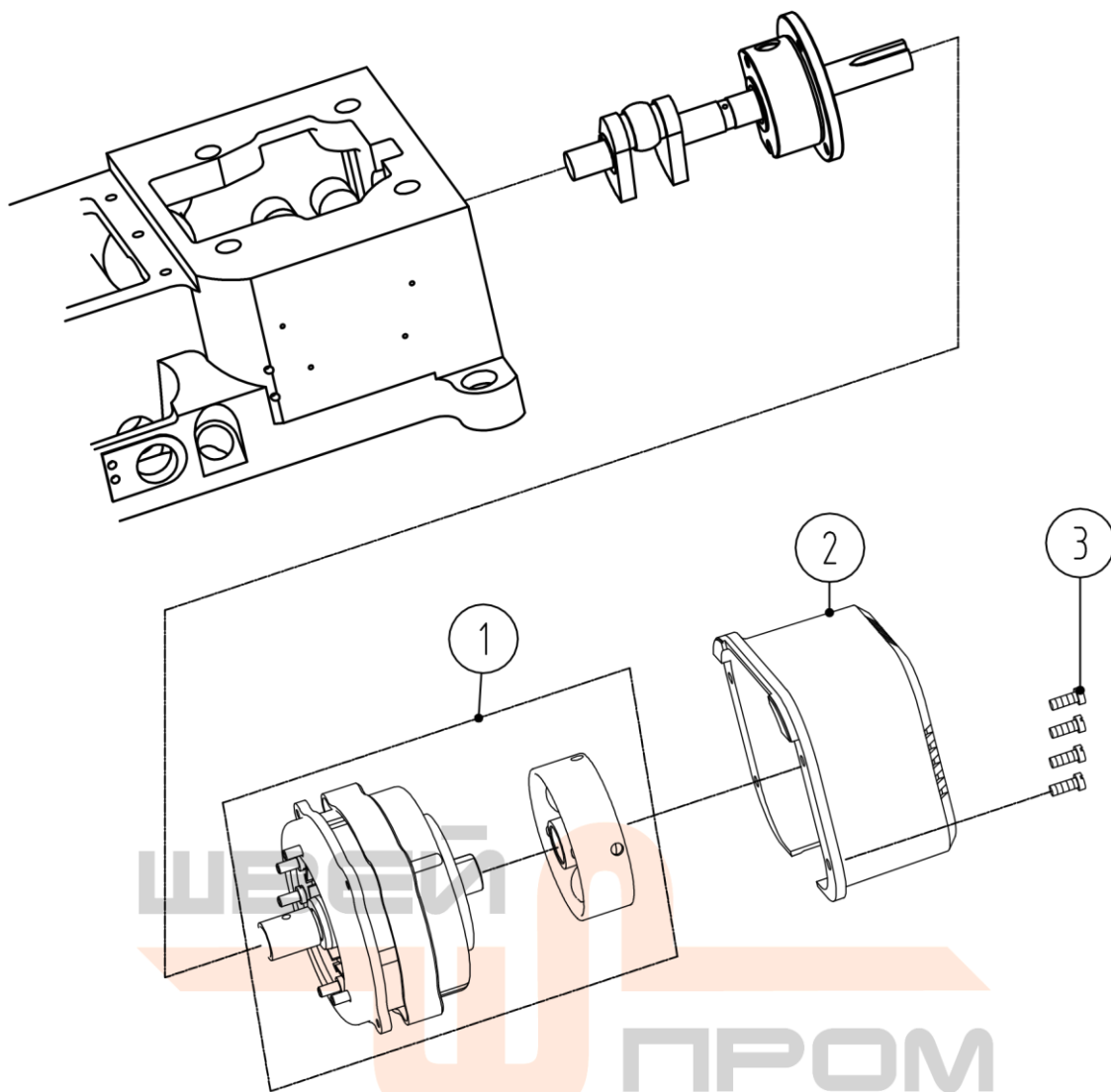




十六、附件部件(3)/ (3)

| 序号 No | 件号 Part No. | 参考件号 Ref.Part.No | 名称 | Description | 数量 Number | 备注 Remark |
|----------|----------------|---------------------|---------|----------------|--------------|--------------|
| 1 | 30122029 | 206338 | 油盘减振垫 | Rubber cushion | 4 | |
| 2 | 20131028 | 206336 | 托盘固定螺母 | Nut | 4 | |
| 3 | 20131027 | 4512 | 托板内六角螺钉 | Bolt | 4 | |
| 4 | 20131029 | KX08 | 金属垫圈 | Washer | 8 | |
| 5 | 30122029 | KX09 | 托板减振垫 | Rubber cushion | 4 | |
| 6 | 30103078 | ----- | 减振垫支撑套 | Spacer | 4 | |
| 7 | 30122031 | ----- | 减震垫圈 | Rubber cushion | 4 | |
| 8 | 30531028 | ----- | 附件盒 | Accessory Box | 1 | |
| 9 | 30532001 | VN01 | 安装板 | Rest board | 2 | |
| 10 | 301S30018 | ----- | 螺钉 | Screw | 4 | |
| 11 | 30531025 | ----- | 泡沫箱 (上) | Box | 1 | |
| 12 | 30531026 | ----- | 泡沫箱 (下) | Box | 1 | |
| 13 | 30531027 | ----- | 纸箱 | Paper Box | 1 | |





十七、DI 直驱专用部件/DI Special for direct drive assemblies

| 序号 No | 件号 Part No. | 参考件号 Ref.Part.No | 名称 | Description | 数量 Number | 备注 Remark |
|----------|----------------|---------------------|-----------------|-----------------------------------|--------------|--------------|
| 1 | 3053300200 | | 直驱电机 | Motor direct drive | 1 | |
| 2 | 30511011 | | 电机护罩 | Motor cover | 1 | |
| 3 | S01059 | SM534 | 开槽球面圆柱头螺钉 M5×13 | Screw | 7 | |
| 4 | 3053004000 | ----- | 控制器 | Direct-drive interlock controller | 1 | |

| | | | | | | |
|---|----------|--|-----|--------------------|---|--|
| 5 | 20730338 | | 调速器 | eccentric retainer | 1 | |
| 6 | 20730335 | | 拉杆 | Link | 1 | |



标准度量零件表 Standard Measurement Part List

|  |  |  |  |  |  |  |  |  | |
|---|---|---|---|---|--|---|---|---|---------------|
| 模型 MODEL | 规格 SYB CLASS | 种类 NEEDLE HOLDER | 针架头 NEEDLE CLAMP | 针板 NEED PLATE | 牙齿 FEED DOG | 压脚 PRESSER FOOT | 喂针轴 PETAINER HOLDER | 弯针架 LOOPER HOLDER | 针规格 NEEDLE |
| JK-8009VC-040 | 64P | 1/4" | 30534009 | 30515009 | 30514009 | 30516009 | 30502034 | 30504028 | 14# |
| | 80P | 5/16" | 30534018 | 30515019 | 30514020 | 30516021 | 30502050 | 30504040 | 16# |
| | 85P | 1/3" | 30534001 | 30515001 | 30514001 | 30516001 | 30502008 | 30504008 | 16# |
| | 95P | 3/8" | 30534013 | 30515013 | 30514013 | 30516013 | 305020032 | 30504024 | 16# |
| JK-8009VC-060 | 48P | 3/16" | 30534012 | 30515012 | 30514012 | 30516012 | 305020031 | 30504023 | 14# |
| | 64P | 1/4" | 30534003 | 30515003 | 30514003 | 30516003 | 305020024 | 30504016 | 14# |
| | 80P | 5/16" | 30534011 | 30515011 | 30514011 | 30516011 | 30502030 | 30504030 | 16# |
| | 95P | 3/8" | 30534022 | 30515051 | 30514024 | 30516025 | 30502054 | 30504044 | 16# |
| JK-8009VC-080 | 32P | 1/8" | 30534014 | 30515015 | 30514015 | 30516016 | 30502036 | 30504031 | 14# |
| | 48P | 3/16" | 30534020 | 30515021 | 30514022 | 30516023 | 30502052 | 30504042 | 14# |
| | 64P | 1/4" | 30534004 | 30515004 | 30514004 | 30516004 | 30502025 | 30504017 | 14# |
| | 85P | 1/3" | 30534016 | 30515017 | 30514018 | 30516018 | 30502037 | 30504038 | 16# |
| JK-8009VC-120 | 32P | 1/8" | 30534017 | 30515018 | 30514019 | 30516020 | 30502049 | 30504039 | 14# |
| | 48P | 3/16" | 30534010 | 30515010 | 30514010 | 30516010 | 30502035 | 30504029 | 14# |
| | 64P | 1/4" | 30534002 | 30515002 | 30514002 | 30516002 | 30502009 | 30504009 | 14# |
| JK-8009VC-130 | 64-32P | 1/4"-1/8" | 30534005 | 30515005 | 30514005 | 30516005 | 30502026 | 30504018 | 14# |
| JK-8009VC-170 | 32P | 1/8" | 30534006 | 30515006 | 30514006 | 30516006 | 30502027 | 30504019 | 14# |
| JK-8009VC-230 | 32P | 1/8" | 30534015 | 30515016 | 30514017 | 30516017 | 30502038 | 30504037 | 14# |
| JK-8009VC-250 | 32P | 1/8" | 30534008 | 30515008 | 30514008 | 30516008 | 30502029 | 30504021 | 14# |

杰克缝纫机
全球销量遥遥领先
Leading in global sales

400-8876-858
www.chinajack.com



JACK SEWING MACHINE CO.,LTD.

2019年1月份 Edition: January, 2019

杰克缝纫机股份有限公司

浙江省台州市椒江区机场南路15号
电话 :0086-576-88177788 88177789
传真 :0086-576-88177758
产品标准代号 : Q/TK 007-2017
资料如有更改, 恕不另行通知, 以实样为准

JACK SEWING MACHINE CO.,LTD.

No. 15 Airport South Road, Jiaojiang District, Taizhou, Zhejiang, PRC
TEL: 0086-576-88177782 88177767 E-mail: sales@chinajack.com
FAX: 0086-576-88177787 www.chinajack.com
Standard code of the products: Q/TK 007-2017
You will be not informed if the file has been revised. Please set sample as standard.